

H2-Ab1 Rabbit pAb

货号: AYP12815

产品信息

反应	Human,Mouse,Rat
宿主	Rabbit
克隆性	Polyclonal
预测反应	WB: Mus musculus IF: Mus musculus
应用	WB IHC IF/ICC
推荐浓度	WB: 1:100 - 1:500 IHC: 1:50 - 1:200 IF/ICC: 1:50 - 1:200
理论分子量	
实测分子量	30KDa
形式	Liquid
保存条件	Store at -20°C. Avoid freeze / thaw cycles. Buffer: PBS with 0.05% proclin300,50% glycerol,pH7.3.
偶联物	Unconjugated
阳性对照	Mouse large intestine
细胞定位	cell surface,early endosome,external side of plasma membrane,Golgi apparatus,multivesicular body,plasma membrane
纯化	Affinity purification

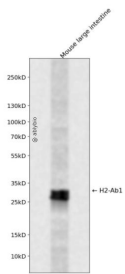
抗原信息

抗原信息	Recombinant fusion protein containing a sequence corresponding to amino acids 30-219 of mouse H2-Ab 1 (NP_996988.2).
序列	SERHFVYQFMGECYFTNGTQRIYVTRYIYNREEYVRYDSDVGEHRAVTELGRPD AEYWNSQPEILERTRAELDTVCRHNY EGPETHTSLRRLEQPNVVISLSRTEALNHHNTLVCSVTDFYPAKIKVRWFRNGQEETVGVSSSTQLIRNGDWTFQVLVMLEM TPRRGEVYTCHVEHPSLKSPITVEWRAQ

靶点信息

研究背景	Enables several functions, including peptide antigen binding activity; protein antigen binding activity; and toxic substance binding activity. Involved in several processes, including B cell affinity maturation; cellular response to interferon-gamma; and positive regulation of T-helper 1 type immune response. Acts upstream of or within antigen processing and presentation of exogenous peptide antigen via MHC class II and immune response. Located in Golgi apparatus; endosome; and external side of plasma membrane. Is integral component of membrane. Part of MHC class II protein complex. Is expressed in lung; metanephros; and thymus primordium. Orthologous to human HLA-DQB2 (major histocompatibility complex, class II, DQ beta 2).
基因ID	14961
基因名	
Swiss	P06345
别名	AI845868; Abeta; H-2Ab; H2-Ab; I-Abeta; IAb; Ia-2; Ia2; Rmcs1

产品验证



Western blot analysis of H2-Ab1 expressed in Mouse large intestine using H2-Ab1 Rabbit pAb at 1:1000. Secondary antibody: HRP Goat Anti-Rabbit IgG (H+L) at 1:5000. Lysates/proteins: 30ug per lane. Blocking buffer: 5% non-fat dry milk in TBST. Detection: ECL Enhanced Kit. Exposure time: 120s.

实验步骤

访问官网浏览详情: www.ablybio.cn