

# Phospho-PPP2CA/PPP2CB-Y307 Rabbit pAb

货号: **AYP12755**

## 产品信息

反应	Human,Mouse
宿主	Rabbit
克隆性	Polyclonal
预测反应	<b>WB:</b> Homo sapiens , Mus musculus
应用	<a href="#">WB</a>
推荐浓度	<b>WB:</b> 1:500 - 1:2000
理论分子量	
实测分子量	38kDa
形式	Liquid
保存条件	Store at -20°C. Avoid freeze / thaw cycles. Buffer: PBS with 0.01% thiomersal,50% glycerol,pH7.3.
偶联物	Unconjugated
阳性对照	HeLa,NIH/3T3
细胞定位	cytosol,extracellular exosome,microtubule cytoskeleton,mitochondrion,nucleus,plasma membrane,spindle pole,synapse
纯化	Affinity purification

## 抗原信息

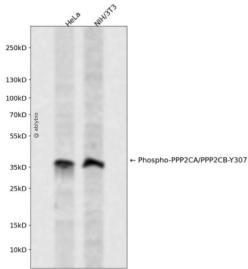
抗原信息	A synthetic phosphorylated peptide around Y307 of human PPP2CA/PPP2CBPPP2CB (NP_001009552.1).
序列	PDYFL

## 靶点信息

研究背景	This gene encodes the phosphatase 2A catalytic subunit. Protein phosphatase 2A is one of the four major Ser/Thr phosphatases, and it is implicated in the negative control of cell growth and division. It consists of a common heteromeric core enzyme, which is composed of a catalytic subunit and a constant regulatory subunit, that associates with a variety of regulatory subunits. This gene encodes an alpha isoform of the catalytic subunit. [provided by RefSeq, Jul 2008]
基因ID	5515,5516

基因名	PPP2CA,PPP2CB
Swiss	P67775,P62714
别名	PPP2CA/PPP2CB

## 产品验证



Western blot analysis of Phospho-PPP2CA/PPP2CB-Y307 expressed in HeLa,NIH/3T3 using Phospho-PPP2CA/PPP2CB-Y307 Rabbit pAb at 1:1000. Secondary antibody: HRP Goat Anti-Rabbit IgG (H+L) at 1:5000. Lysates/proteins: 30ug per lane. Blocking buffer: 5% non-fat dry milk in TBST. Detection: ECL Enhanced Kit. Exposure time: 120s.

## 实验步骤

访问官网浏览详情: [www.ablybio.cn](http://www.ablybio.cn)