

pan-Phospho-Serine Rabbit pAb

货号: AYP12736

产品信息

反应	Mouse
宿主	Rabbit
克隆性	Polyclonal
预测反应	WB: Mus musculus
应用	WB
推荐浓度	WB: 1:500 - 1:1000
理论分子量	
实测分子量	60KDa
形式	Liquid
保存条件	Store at -20°C. Avoid freeze / thaw cycles. Buffer: PBS with 0.01% thiomersal, 50% glycerol, pH7.3.
偶联物	Unconjugated
阳性对照	NIH/3T3
细胞定位	
纯化	Affinity purification

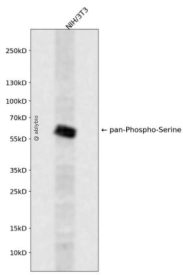
抗原信息

抗原信息	A synthetic peptide corresponding to a sequence containing phosphorylated S & T.
序列	

靶点信息

研究背景	
基因ID	
基因名	
Swiss	
别名	

产品验证



Western blot analysis of pan-Phospho-Serine expressed in NIH/3T3 using pan-Phospho-Serine Rabbit pAb at 1:1000. Secondary antibody: HRP Goat Anti-Rabbit IgG (H+L) at 1:5000. Lysates/proteins: 30ug per lane. Blocking buffer: 5% non-fat dry milk in TBST. Detection: ECL Enhanced Kit. Exposure time: 120s.

实验步骤

访问官网浏览详情: www.ablybio.cn