

WWC1 Rabbit pAb

货号: **AYP12725**

产品信息

反应	Human,Mouse,Rat
宿主	Rabbit
克隆性	Polyclonal
预测反应	WB: Homo sapiens , Mus musculus
应用	WB IHC
推荐浓度	WB: 1:500 - 1:2000 IHC: 1:50 - 1:200
理论分子量	
实测分子量	125kDa
形式	Liquid
保存条件	Store at -20°C. Avoid freeze / thaw cycles. Buffer: PBS with 0.01% thiomersal,50% glycerol,pH7.3.
偶联物	Unconjugated
阳性对照	HeLa,Mouse lung,Mouse brain,Rat brain
细胞定位	cytoplasm,cytosol,nucleus,perinuclear region of cytoplasm,ruffle membrane
纯化	Affinity purification

抗原信息

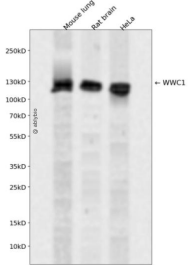
抗原信息	Recombinant fusion protein containing a sequence corresponding to amino acids 290-426 of human WWC 1 (NP_056053.1).
序列	FGINSNNQLAEKVRLRLRYEEAKRRRIANLKIQLAKLDSEAWPGVLDSEDRDLILINEKEELLKEMRFISPRKWTQGEVEQLEM ARKRLEKDLQAARDTQSKALTERLKLNSKRNQLVRELEEATRQVATLHSQLKSL

靶点信息

研究背景	The protein encoded by this gene is a cytoplasmic phosphoprotein that interacts with PRKC-zeta and dyn ein light chain-1. Alleles of this gene have been found that enhance memory in some individuals. Three tr anscript variants encoding different isoforms have been found for this gene.
基因ID	23286

基因名	WWC1
Swiss	Q8IX03
别名	WWC1;HBEBP3;HBEBP36;KIBRA;MEMRYQTL;PPP1R168

产品验证



Western blot analysis of WWC1 expressed in Mouse lung,Rat brain,HeLa using WWC1 Rabbit pAb at 1:1 000. Secondary antibody: HRP Goat Anti-Rabbit IgG (H+L) at 1:5000. Lysates/proteins: 30ug per lane. Blocking buffer: 5% non-fat dry milk in TBST. Detection: ECL Enhanced Kit. Exposure time: 120s.

实验步骤

访问官网浏览详情: www.ablybio.cn