

ROS1 Rabbit pAb

货号: **AYP12712**

产品信息

反应	Human,Mouse
宿主	Rabbit
克隆性	Polyclonal
预测反应	WB: Mus musculus
应用	WB
推荐浓度	WB: 1:500 - 1:2000
理论分子量	263kDa
实测分子量	263kDa
形式	Liquid
保存条件	Store at -20°C. Avoid freeze / thaw cycles. Buffer: PBS with 0.01% thiomersal,50% glycerol,pH7.3.
偶联物	Unconjugated
阳性对照	Mouse brain
细胞定位	plasma membrane
纯化	Affinity purification

抗原信息

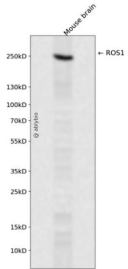
抗原信息	A synthetic peptide corresponding to a sequence within amino acids 2100-2200 of human ROS1 (NP_002935.2).
序列	IGDFGLARDIYKNDYYRKRGEGLLPVRWMAPESLMDGIFTTQSDVWSFGILIWEILTLGHQPYPAHSNLDVNLNYVQTGGRL EPPRNCDDLWNLMTQCWAQ

靶点信息

研究背景	This proto-oncogene, highly-expressed in a variety of tumor cell lines, belongs to the sevenless subfamily of tyrosine kinase insulin receptor genes. The protein encoded by this gene is a type I integral membrane protein with tyrosine kinase activity. The protein may function as a growth or differentiation factor receptor.
基因ID	6098

基因名	ROS1
Swiss	P08922
别名	ROS1;MCF3;ROS;c-ros-1

产品验证



Western blot analysis of ROS1 expressed in Mouse brain using ROS1 Rabbit pAb at 1:1000. Secondary anti body: HRP Goat Anti-Rabbit IgG (H+L) at 1:5000. Lysates/proteins: 30ug per lane. Blocking buffer: 5% no n-fat dry milk in TBST. Detection: ECL Enhanced Kit. Exposure time: 120s.

实验步骤

访问官网浏览详情: www.ablybio.cn