

— ABLYBIO, Help Your Research



TERF2 Rabbit pAb

货号: **AYP12711**

产品信息

反应	Human,Mouse,Rat
宿主	Rabbit
克隆性	Polyclonal
预测反应	WB: Mus musculus IHC: Mus musculus
应用	WB
推荐浓度	WB: 1:500 - 1:2000
理论分子量	32kDa/59kDa
实测分子量	70kDa
形式	Liquid
保存条件	Store at -20°C. Avoid freeze / thaw cycles. Buffer: PBS with 0.01% thiomersal,50% glycerol,pH7.3.
偶联物	Unconjugated
阳性对照	Jurkat,HeLa,Mouse lung
细胞定位	Chromosome,Nucleus,telomere
纯化	Affinity purification

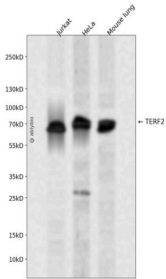
抗原信息

抗原信息	A synthetic peptide corresponding to a sequence within amino acids 200-300 of human TERF2 (NP_005643.2).
------	--

靶点信息

研究背景	This gene encodes a telomere specific protein, TERF2, which is a component of the telomere nucleoprotein complex. This protein is present at telomeres in metaphase of the cell cycle, is a second negative regulator of telomere length and plays a key role in the protective activity of telomeres. While having similar telomere binding activity and domain organization, TERF2 differs from TERF1 in that its N terminus is basic rather than acidic.
基因ID	7014
基因名	TERF2
Swiss	Q15554 (https://www.uniprot.org/uniprotkb/Q15554/entry)
别名	TERF2,TRBF2,TRF2,TERF2 Rabbit pAb,TTAGGG repeat-binding factor 2,Telomeric DNA-binding protein

产品验证



Western blot analysis of TERF2 expressed in Jurkat, HeLa, Mouse lung using TERF2 Rabbit pAb at 1:1000. Secondary antibody: HRP Goat Anti-Rabbit IgG (H+L) at 1:5000. Lysates/proteins: 30ug per lane. Blocking buffer: 5% non-fat dry milk in TBST. Detection: ECL Enhanced Kit. Exposure time: 120s.

实验步骤

访问官网浏览详情: www.ablybio.cn (<https://www.ablybio.cn/>www.ablybio.cn)