

# MCU Rabbit pAb

货号: **AYP12707**

## 产品信息

反应	Human,Mouse,Rat
宿主	Rabbit
克隆性	Polyclonal
预测反应	<b>WB:</b> Homo sapiens , Mus musculus
应用	<a href="#">WB</a> <a href="#">IF/ICC</a>
推荐浓度	<b>WB:</b> 1:500 - 1:1000 <b>IF/ICC:</b> 1:50 - 1:200
理论分子量	35kDa/36kDa/39kDa
实测分子量	30KDa
形式	Liquid
保存条件	Store at -20°C. Avoid freeze / thaw cycles. Buffer: PBS with 0.05% proclin300,50% glycerol,pH7.3.
偶联物	Unconjugated
阳性对照	HeLa,293T,HepG2,NIH/3T3,Mouse large intestine,PC-12
细胞定位	mitochondrial inner membrane,mitochondrion
纯化	Affinity purification

## 抗原信息

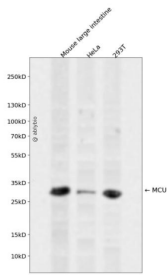
抗原信息	Recombinant fusion protein containing a sequence corresponding to amino acids 1-351 of human MCU (N P_612366.1).
序列	MAAAAGRSLLLLSSRGGGGGGAGGCGALTAGCFPLGVSRHRQQHHRTVHQRIASWQNLGAVYCSTVVPSSDDVTV VYQNGLPVISVRLPSRRERCQFTLKPISDSVGVFLRQLQEEDRGIDRVVAIYSPDGVRVAASTGIDLLLLDDFKLVINDLTYHV RPPKRDLLSHENAATLNDVKTLVQQLYTTLCIEQHQLNKERELIERLEDLKEQLAPLEKVRIEISRKAERKRTTLVLWGGLAYMA TQFGILARLTWWEYSWDIMEPVTYFITYGSAMAMYAYFVMTRQEYVYPEARDRQYLLFFHKGAKKSRFDLEKYNQLKDAIA QAEMDLKRLRDPLQVHPLRQIGEKD

## 靶点信息

研究背景	This gene encodes a calcium transporter that localizes to the mitochondrial inner membrane. The encoded protein interacts with mitochondrial calcium uptake 1. Alternative splicing results in multiple transcript variants.
------	--

基因ID	90550
基因名	MCU
Swiss	Q8NE86
别名	MCU;C10orf42;CCDC109A;HsMCU

## 产品验证



Western blot analysis of MCU expressed in Mouse large intestine, HeLa, 293T using MCU Rabbit pAb at 1:1000. Secondary antibody: HRP Goat Anti-Rabbit IgG (H+L) at 1:5000. Lysates/proteins: 30ug per lane. Blocking buffer: 5% non-fat dry milk in TBST. Detection: ECL Enhanced Kit. Exposure time: 120s.

## 实验步骤

访问官网浏览详情: [www.ablybio.cn](http://www.ablybio.cn)