

NOTCH2 Rabbit pAb

货号: **AYP12686**

产品信息

反应	Human,Mouse,Rat
宿主	Rabbit
克隆性	Polyclonal
预测反应	IHC: Mus musculus WB: Homo sapiens
应用	WB IF/ICC
推荐浓度	WB: 1:500 - 1:2000 IF/ICC: 1:50 - 1:200
理论分子量	265kDa
实测分子量	120kDa
形式	Liquid
保存条件	Store at -20°C. Avoid freeze / thaw cycles. Buffer: PBS with 0.02% sodium azide,50% glycerol,pH7.3.
偶联物	Unconjugated
阳性对照	293T,LO2,HeLa
细胞定位	Cell membrane,Cytoplasm,Nucleus,Single-pass type I membrane protein
纯化	Affinity purification

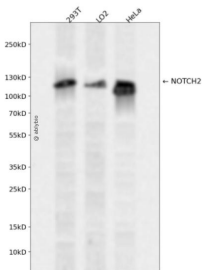
抗原信息

抗原信息	Recombinant fusion protein containing a sequence corresponding to amino acids 2242-2471 of human N OTCH2 (NP_077719.2).
序列	SRLHPVVPADWMNRMEVNETQYNEMFGMVLAPAEGTHPGIAPQSRPPEGKHITTPREPLPIVTFQLIPKGSIAQPAGAP QPQSTCPPAVAGPLPTMYQIPEMARLPSVAFPTAMMPQQDGQVAQTILPAYHPPASVKGKYTPPSQHSYASSNAAERTP SHSGHLQGEHPYLTPSPESPQWSSSSPHSASDWSDVTTSPTPGGAGGGQRGPGTHMSEPPHNNMQVYA

靶点信息

研究背景	This gene encodes a member of the Notch family. Members of this Type 1 transmembrane protein family share structural characteristics including an extracellular domain consisting of multiple epidermal growth factor-like (EGF) repeats, and an intracellular domain consisting of multiple, different domain types. Notch family members play a role in a variety of developmental processes by controlling cell fate decisions. The Notch signaling network is an evolutionarily conserved intercellular signaling pathway which regulates interactions between physically adjacent cells. In Drosophila, notch interaction with its cell-bound ligands (delta, serrate) establishes an intercellular signaling pathway that plays a key role in development. Homologues of the notch-ligands have also been identified in human, but precise interactions between these ligands and the human notch homologues remain to be determined. This protein is cleaved in the trans-Golgi network, and presented on the cell surface as a heterodimer. This protein functions as a receptor for membrane bound ligands, and may play a role in vascular, renal and hepatic development. Two transcript variants encoding different isoforms have been found for this gene.
基因ID	4853
基因名	NOTCH2
Swiss	Q04721
别名	NOTCH2;AGS2;HJCYS;hN2;notch 2

产品验证



Western blot analysis of NOTCH2 expressed in 293T, LO2, HeLa using NOTCH2 Rabbit pAb at 1:1000. Secondary antibody: HRP Goat Anti-Rabbit IgG (H+L) at 1:5000. Lysates/proteins: 30ug per lane. Blocking buffer: 5% non-fat dry milk in TBST. Detection: ECL Enhanced Kit. Exposure time: 120s.

实验步骤

访问官网浏览详情: www.ablybio.cn