

Endothelin 1 Rabbit pAb

货号: **AYP12679**

产品信息

反应	Human,Mouse,Rat
宿主	Rabbit
克隆性	Polyclonal
预测反应	WB: Mus musculus IHC: Mus musculus
应用	WB IF/ICC
推荐浓度	WB: 1:500 - 1:1000 IF/ICC: 1:50 - 1:200
理论分子量	24kDa
实测分子量	26KDa
形式	Liquid
保存条件	Store at -20°C. Avoid freeze / thaw cycles. Buffer: PBS with 0.05% proclin300,50% glycerol,pH7.3.
偶联物	Unconjugated
阳性对照	BxPC-3,Rat heart
细胞定位	Secreted
纯化	Affinity purification

抗原信息

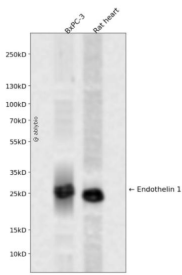
抗原信息	Recombinant fusion protein containing a sequence corresponding to amino acids 18-212 of human Endothelin 1 (NP_001946.3).
序列	APETAVLGAELSAVGENGGKPTSPWPWRLRRSKRCSSSLMDKECVYFCHLDIIWVNTPEHVVPYGLGSPRSKRALENLLPTKATDRENRCQCASQDKKWCWFCQAGKELRAEDIMEKDWNHKKGKDCSKLGKKCIYQQLVGRKIRRSSEEHLRQTRSETMRNSVKSSFHDPKLGKGPSRERYVTHNRAHW

靶点信息

研究背景	This gene encodes a preproprotein that is proteolytically processed to generate a secreted peptide that belongs to the endothelin/sarafotoxin family. This peptide is a potent vasoconstrictor and its cognate receptors are therapeutic targets in the treatment of pulmonary arterial hypertension. Aberrant expression of this gene may promote tumorigenesis. Alternative splicing results in multiple transcript variants.
------	---

基因ID	1906
基因名	EDN1
Swiss	P05305
别名	EDN1;ARCND3;ET1;HDLCQ7;PPET1;QME;endothelin-1

产品验证



Western blot analysis of Endothelin 1 expressed in BxPC-3,Rat heart using Endothelin 1 Rabbit pAb at 1:1000. Secondary antibody: HRP Goat Anti-Rabbit IgG (H+L) at 1:5000. Lysates/proteins: 30ug per lane. Blocking buffer: 5% non-fat dry milk in TBST. Detection: ECL Enhanced Kit. Exposure time: 120s.

实验步骤

访问官网浏览详情: www.ablybio.cn