

EIF4G1 Rabbit pAb

货号: **AYP12673**

产品信息

反应	Human,Mouse,Rat
宿主	Rabbit
克隆性	Polyclonal
预测反应	WB: Homo sapiens
应用	WB
推荐浓度	WB: 1:500 - 1:1000
理论分子量	154kDa/158kDa/166kDa/171kDa/175kDa/176kDa
实测分子量	250kDa
形式	Liquid
保存条件	Store at -20°C. Avoid freeze / thaw cycles. Buffer: PBS with 0.01% thiomersal,50% glycerol,pH7.3.
偶联物	Unconjugated
阳性对照	HeLa,NIH/3T3,PC-12
细胞定位	cytoplasm,cytoplasmic stress granule,cytosol,eukaryotic translation initiation factor 4F complex,nucleus, postsynapse
纯化	Affinity purification

抗原信息

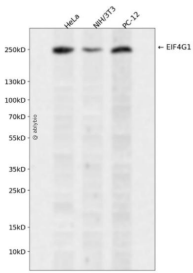
抗原信息	A synthetic phosphorylated peptide around S1108 of human EIF4G1 (NP_001181875.1).
序列	GGSGA

靶点信息

研究背景	The protein encoded by this gene is a component of the multi-subunit protein complex EIF4F. This complex facilitates the recruitment of mRNA to the ribosome, which is a rate-limiting step during the initiation phase of protein synthesis. The recognition of the mRNA cap and the ATP-dependent unwinding of 5'-terminal secondary structure is catalyzed by factors in this complex. The subunit encoded by this gene is a large scaffolding protein that contains binding sites for other members of the EIF4F complex. A domain at its N-terminus can also interact with the poly(A)-binding protein, which may mediate the circularization of mRNA during translation. Alternative splicing results in multiple transcript variants, some of which are derived from alternative promoter usage.
------	---

基因ID	1981
基因名	EIF4G1
Swiss	Q04637
别名	EIF4G1;EIF-4G1;EIF4F;EIF4G;EIF4GI;P220;PARK18

产品验证



Western blot analysis of EIF4G1 expressed in HeLa,NIH/3T3,PC-12 using EIF4G1 Rabbit pAb at 1:1000. Secondary antibody: HRP Goat Anti-Rabbit IgG (H+L) at 1:5000. Lysates/proteins: 30ug per lane. Blocking buffer: 5% non-fat dry milk in TBST. Detection: ECL Enhanced Kit. Exposure time: 120s.

实验步骤

访问官网浏览详情: www.ablybio.cn