

# COPE Rabbit pAb

货号: **AYP12670**

## 产品信息

反应	Human,Mouse,Rat
宿主	Rabbit
克隆性	Polyclonal
预测反应	<b>WB:</b> Homo sapiens , Sus scrofa
应用	<a href="#">WB</a>
推荐浓度	<b>WB:</b> 1:500 - 1:1000
理论分子量	28kDa/34kDa
实测分子量	34KDa
形式	Liquid
保存条件	Store at -20°C. Avoid freeze / thaw cycles. Buffer: PBS with 0.02% sodium azide,50% glycerol,pH7.3.
偶联物	Unconjugated
阳性对照	HeLa,HT-29,U-251MG,Mouse stomach,Rat pancreas
细胞定位	COPI-coated vesicle membrane,Cytoplasm,Cytoplasmic side,Cytoplasmic vesicle,Golgi apparatus membrane,Peripheral membrane protein
纯化	Affinity purification

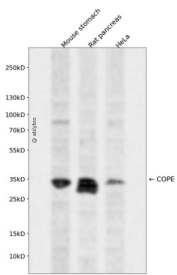
## 抗原信息

抗原信息	Recombinant fusion protein containing a sequence corresponding to amino acids 1-308 of human COPE ( NP_009194.2).
序列	MAPPAPGPASGGSGEVDELFDVKNFYIGSYQQCINEAQRVKLSSPERDVERDVFLYRAYLAQRKFGVVLDEIKPSSAPELQAVRMFADYLAHESRRDSIVAELDREMSRSVDVTNTTFLMAASIYLDQNPDAALRALHQGDSLECTAMTVQILLKLDRLDLARKELKRMQDLDEDATLTQLATAWVSLATGGEKLQDAYYIFQEMADKCSPTLLLLNGQAACHMAQGRWEAAEGLLQEALDKDSGYPETLVNLIIVLSQHLGKPEVTNRYLSQLKDAHRSHPFKEYQAKENDFDRLVLQYAPSA

## 靶点信息

研究背景	The product of this gene is an epsilon subunit of coatomer protein complex. Coatomer is a cytosolic protein complex that binds to dilysine motifs and reversibly associates with Golgi non-clathrin-coated vesicles. It is required for budding from Golgi membranes, and is essential for the retrograde Golgi-to-ER transport of dilysine-tagged proteins. Coatomer complex consists of at least the alpha, beta, beta', gamma, delta, epsilon and zeta subunits. Alternatively spliced transcript variants encoding different isoforms have been identified.
基因ID	11316
基因名	COPE
Swiss	O14579
别名	COPE;epsilon-COP

## 产品验证



Western blot analysis of COPE expressed in Mouse stomach, Rat pancreas, HeLa using COPE Rabbit pAb at 1:1000. Secondary antibody: HRP Goat Anti-Rabbit IgG (H+L) at 1:5000. Lysates/proteins: 30ug per lane. Blocking buffer: 5% non-fat dry milk in TBST. Detection: ECL Enhanced Kit. Exposure time: 120s.

## 实验步骤

访问官网浏览详情: [www.ablybio.cn](http://www.ablybio.cn)