

IL36R Rabbit pAb

货号: **AYP12669**

产品信息

反应	Human,Mouse,Rat
宿主	Rabbit
克隆性	Polyclonal
预测反应	WB: Mus musculus
应用	WB IF/ICC
推荐浓度	WB: 1:500 - 1:2000 IF/ICC: 1:50 - 1:200
理论分子量	51kDa/65kDa
实测分子量	65kDa
形式	Liquid
保存条件	Store at -20°C. Avoid freeze / thaw cycles. Buffer: PBS with 0.02% sodium azide,50% glycerol,pH7.3.
偶联物	Unconjugated
阳性对照	MCF7,SW620,K-562,Mouse lung,Mouse heart
细胞定位	Membrane,Single-pass type I membrane protein
纯化	Affinity purification

抗原信息

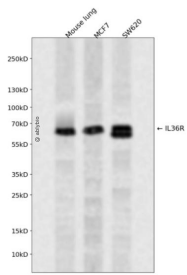
抗原信息	Recombinant fusion protein containing a sequence corresponding to amino acids 1-116 of human IL36R (NP_003845.2).
序列	MWSLLLCGLSIALPLSVTADGCKDIFMKNEILSASQPFAFNCTFPPITSGEVSVTWYKNSSKIPVSKIIQSRIHQDETWILFLPMEWGDGSGVYQCVIKGRDSCRHIHVNLTVFEKH

靶点信息

研究背景	The protein encoded by this gene is a member of the interleukin 1 receptor family. An experiment with transient gene expression demonstrated that this receptor was incapable of binding to interleukin 1 alpha and interleukin 1 beta with high affinity. This gene and four other interleukin 1 receptor family genes, including interleukin 1 receptor, type I (IL1R1), interleukin 1 receptor, type II (IL1R2), interleukin 1 receptor-like 1 (IL1RL1), and interleukin 18 receptor 1 (IL18R1), form a cytokine receptor gene cluster in a region mapped to chromosome 2q12.
------	--

基因ID	8808
基因名	IL1RL2
Swiss	Q9HB29
别名	IL1RL2;IL-1Rrp2;IL-36R;IL1R-rp2;IL1RRP2;IL36R

产品验证



Western blot analysis of IL36R expressed in Mouse lung, MCF7, SW620 using IL36R Rabbit pAb at 1:1000. Secondary antibody: HRP Goat Anti-Rabbit IgG (H+L) at 1:5000. Lysates/proteins: 30ug per lane. Blocking buffer: 5% non-fat dry milk in TBST. Detection: ECL Enhanced Kit. Exposure time: 120s.

实验步骤

访问官网浏览详情: www.ablybio.cn