

# PDX1 Rabbit pAb

货号: **AYP12668**

## 产品信息

反应	Human,Mouse
宿主	Rabbit
克隆性	Polyclonal
预测反应	<b>WB:</b> Mus musculus
应用	<a href="#">WB</a>
推荐浓度	<b>WB:</b> 1:500 - 1:1000
理论分子量	30kDa
实测分子量	39kDa
形式	Liquid
保存条件	Store at -20°C. Avoid freeze / thaw cycles. Buffer: PBS with 0.02% sodium azide,50% glycerol,pH7.3.
偶联物	Unconjugated
阳性对照	DU145,HepG2,Mouse pancreas,Mouse liver
细胞定位	Cytoplasm,Nucleus,cytosol
纯化	Affinity purification

## 抗原信息

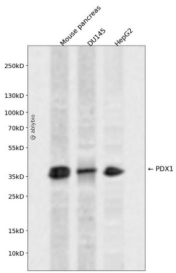
抗原信息	A synthetic peptide corresponding to a sequence within amino acids 1-100 of human PDX1 (NP_000200.1).
序列	MNGEEQYYAATQLYKDPCAFQRGPAPEFSASPPACLYMGRQPPPPPHFPGALGALEQGSPDISPYEVPPLADDPAVA HLHHHLPAQLALPHPPAGPF

## 靶点信息

研究背景	The protein encoded by this gene is a transcriptional activator of several genes, including insulin, somatostatin, glucokinase, islet amyloid polypeptide, and glucose transporter type 2. The encoded nuclear protein is involved in the early development of the pancreas and plays a major role in glucose-dependent regulation of insulin gene expression. Defects in this gene are a cause of pancreatic agenesis, which can lead to early-onset insulin-dependent diabetes mellitus (NIDDM), as well as maturity onset diabetes of the young type 4 (MODY4).
------	--

基因ID	3651
基因名	PDX1
Swiss	P52945
别名	PDX1;GSF;IDX-1;IPF1;IUF1;MODY4;PAGEN1;PDX-1;STF-1

## 产品验证



Western blot analysis of PDX1 expressed in Mouse pancreas,DU145,HepG2 using PDX1 Rabbit pAb at 1:1000. Secondary antibody: HRP Goat Anti-Rabbit IgG (H+L) at 1:5000. Lysates/proteins: 30ug per lane. Blocking buffer: 5% non-fat dry milk in TBST. Detection: ECL Enhanced Kit. Exposure time: 120s.

## 实验步骤

访问官网浏览详情: [www.ablybio.cn](http://www.ablybio.cn)