

SMPD3 Rabbit pAb

货号: **AYP12667**

产品信息

反应	Human,Mouse,Rat
宿主	Rabbit
克隆性	Polyclonal
预测反应	WB: Homo sapiens
应用	WB
推荐浓度	WB: 1:1000 - 1:3000
理论分子量	70kDa/71kDa
实测分子量	80kDa
形式	Liquid
保存条件	Store at -20°C. Avoid freeze / thaw cycles. Buffer: PBS with 0.05% proclin300,50% glycerol,pH7.3.
偶联物	Unconjugated
阳性对照	U-87MG,LO2,A-549,Mouse brain,Rat brain
细胞定位	Cell membrane,Golgi apparatus membrane,Lipid-anchor
纯化	Affinity purification

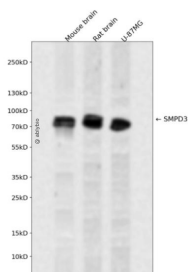
抗原信息

抗原信息	Recombinant fusion protein containing a sequence corresponding to amino acids 416-655 of human SMPD3 (NP_061137.1).
序列	MDVAYHCYPNKCNDALASKGALFLKVQVGSTPQDQRIVGYIACHTLHAPQEDSAIRCGQLDLLQDWLADFRKSTSSSS AANPEELVAFDVVCGDFNFDNCSSDDKLEQQHSLFTHYRDPCLGPGEEKPWAIGLLDTNGLYDEDVCTPDNLQKVLE SEEGRREYLAFPTSKSSGQKGRKELKGNRRIDYMLHAEGLCPDWKAEVEEFSFITQLSGLTDHLPVAMRLMVSSGEE EA

靶点信息

研究背景	Catalyzes the hydrolysis of sphingomyelin to form ceramide and phosphocholine. Ceramide mediates numerous cellular functions, such as apoptosis and growth arrest, and is capable of regulating these 2 cellular events independently. Also hydrolyzes sphingosylphosphocholine. Regulates the cell cycle by acting as a growth suppressor in confluent cells. Probably acts as a regulator of postnatal development and participates in bone and dentin mineralization. Binds to anionic phospholipids (APLs such as phosphatidylserine (PS and phosphatidic acid (PA that modulate enzymatic activity and subcellular location. May be involved in IL-1-beta-induced JNK activation in hepatocytes (By similarity. May act as a mediator in transcriptional regulation of NOS2/iNOS via the NF-kappa-B activation under inflammatory conditions (By similarity.
基因ID	55512
基因名	SMPD3
Swiss	Q9NY59
别名	SMPD3;NSMASE2

产品验证



Western blot analysis of SMPD3 expressed in Mouse brain,Rat brain,U-87MG using SMPD3 Rabbit pAb at 1:1000. Secondary antibody: HRP Goat Anti-Rabbit IgG (H+L) at 1:5000. Lysates/proteins: 30ug per lane. Blocking buffer: 5% non-fat dry milk in TBST. Detection: ECL Enhanced Kit. Exposure time: 120s.

实验步骤

访问官网浏览详情: www.ablybio.cn