

RPS15A Rabbit pAb

货号: **AYP12663**

产品信息

反应	Human,Mouse,Rat
宿主	Rabbit
克隆性	Polyclonal
预测反应	WB: Bombyx mori Linnaeus , Mus musculus
应用	WB IHC
推荐浓度	WB: 1:500 - 1:2000 IHC: 1:50 - 1:200
理论分子量	14kDa
实测分子量	14kDa
形式	Liquid
保存条件	Store at -20°C. Avoid freeze / thaw cycles. Buffer: PBS with 0.02% sodium azide,50% glycerol,pH7.3.
偶联物	Unconjugated
阳性对照	HT-29,SW480,HT-1080,HepG2,Mouse stomach,Mouse liver,Mouse kidney,Rat liver
细胞定位	cytoplasm,cytosol,cytosolic ribosome,extracellular exosome,nucleoplasm
纯化	Affinity purification

抗原信息

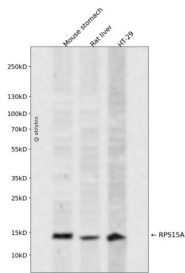
抗原信息	Recombinant fusion protein containing a sequence corresponding to amino acids 1-130 of human RPS15A (NP_001010.2).
序列	MVRMNVLADALKSINNAEKRGKRQVLIRPCSKVIVRFLTVMMKHGYIGEFEIIDDHRAGKIVVNLTGRLNKCGVISPRFDVQ LKDLEKWQNNLLPSRQFGFIVLTTSSAGIMDHEEARRKHTGGKILGFFF

靶点信息

研究背景	Ribosomes, the organelles that catalyze protein synthesis, consist of a small 40S subunit and a large 60S subunit. Together these subunits are composed of 4 RNA species and approximately 80 structurally distinct proteins. This gene encodes a ribosomal protein that is a component of the 40S subunit. The protein belongs to the S8P family of ribosomal proteins. It is located in the cytoplasm. As is typical for genes encoding ribosomal proteins, there are multiple processed pseudogenes of this gene dispersed through the genome.
------	---

基因ID	6210
基因名	RPS15A
Swiss	P62244
别名	RPS15A;S15a

产品验证



Western blot analysis of RPS15A expressed in Mouse stomach,Rat liver,HT-29 using RPS15A Rabbit pAb at 1:1000. Secondary antibody: HRP Goat Anti-Rabbit IgG (H+L) at 1:5000. Lysates/proteins: 30ug per lane. Blocking buffer: 5% non-fat dry milk in TBST. Detection: ECL Enhanced Kit. Exposure time: 120s.

实验步骤

访问官网浏览详情: www.ablybio.cn