

# CACNA2D2 Rabbit pAb

货号: **AYP12661**

## 产品信息

反应	Mouse,Rat
宿主	Rabbit
克隆性	Polyclonal
预测反应	<b>WB:</b> Mus musculus
应用	<a href="#">WB</a>
推荐浓度	<b>WB:</b> 1:200 - 1:2000
理论分子量	122kDa/129kDa/130kDa
实测分子量	140-160kDa
形式	Liquid
保存条件	Store at -20°C. Avoid freeze / thaw cycles. Buffer: PBS with 0.02% sodium azide,50% glycerol,pH7.3.
偶联物	Unconjugated
阳性对照	Mouse brain,Rat heart,Rat brain
细胞定位	Membrane,Single-pass type I membrane protein
纯化	Affinity purification

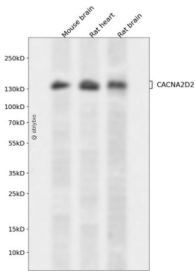
## 抗原信息

抗原信息	Recombinant fusion protein containing a sequence corresponding to amino acids 20-200 of human CACNA2D2 (NP_001167522.1).
序列	RPWPGCGPHPGPGTRRPTSGPPRPLWLLLPLLPLLAAPGASAYSFPQQHTMQHWARRLEQEVDGVMRIFGGVQQLREIYKDNRNLFEVQENEPQKLVEKVAGDIESLLDRKVQALKRLADAAENFQKAHRWQDNIKEEDIVYYDAKADAELDDPESEDVERGSKASTLRLLDFIEDPNFKNK

## 靶点信息

研究背景	Calcium channels mediate the entry of calcium ions into the cell upon membrane polarization. This gene encodes the alpha-2/delta subunit of the voltage-dependent calcium channel complex. The complex consists of the main channel-forming subunit alpha-1, and auxiliary subunits alpha-2/delta, beta, and gamma. The auxiliary subunits function in the assembly and membrane localization of the complex, and modulate calcium currents and channel activation/inactivation kinetics. The subunit encoded by this gene undergoes post-translational cleavage to yield the extracellular alpha2 peptide and a membrane-anchored delta polypeptide. This subunit is a receptor for the antiepileptic drug, gabapentin. Mutations in this gene are associated with early infantile epileptic encephalopathy. Single nucleotide polymorphisms in this gene are correlated with increased sensitivity to opioid drugs. Alternative splicing results in multiple transcript variants encoding different isoforms.
基因ID	9254
基因名	CACNA2D2
Swiss	Q9NY47
别名	CACNA2D2;CACNA2D

## 产品验证



Western blot analysis of CACNA2D2 expressed in Mouse brain, Rat heart, Rat brain using CACNA2D2 Rabbit pAb at 1:1000. Secondary antibody: HRP Goat Anti-Rabbit IgG (H+L) at 1:5000. Lysates/proteins: 30ug per lane. Blocking buffer: 5% non-fat dry milk in TBST. Detection: ECL Enhanced Kit. Exposure time: 120s.

## 实验步骤

访问官网浏览详情: [www.ablybio.cn](http://www.ablybio.cn)