

# Legumain (LGMN) Rabbit pAb

货号: AYP12652

## 产品信息

反应	Human,Mouse,Rat
宿主	Rabbit
克隆性	Polyclonal
预测反应	<b>WB:</b> Homo sapiens <b>IF:</b> Mus musculus
应用	<a href="#">WB</a> <a href="#">IHC</a> <a href="#">IF/ICC</a>
推荐浓度	<b>WB:</b> 1:500 - 1:1000 <b>IHC:</b> 1:50 - 1:200 <b>IF/ICC:</b> 1:50 - 1:200
理论分子量	42kDa/49kDa
实测分子量	36KDa/55KDa
形式	Liquid
保存条件	Store at -20°C. Avoid freeze / thaw cycles. Buffer: PBS with 0.05% proclin300,50% glycerol,pH7.3.
偶联物	Unconjugated
阳性对照	Mouse kidney
细胞定位	Lysosome
纯化	Affinity purification

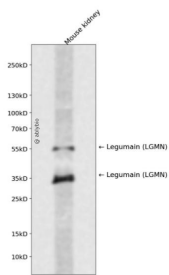
## 抗原信息

抗原信息	Recombinant fusion protein containing a sequence corresponding to amino acids 18-323 of human Legu main (Legumain (LGMN)) (NP_001008530.1).
序列	VPIDDPEDGGKHVWVIVAGSNGWYNYRHQADACHAYQIIHRNGIPDEQIVVMYDDIAYSEDNPTPGIVINRPNGTDVYQ GVPKDYTGEDVTPQNFLAVLRGDAEAVKIGSGKVLKSGPQDHVFIYFTDHGSGTILVFPNEDLHVKDLNETIHMYKHK MYRKMVFYIEACESGSMNHLDPDNINVYATTAANPRESSYACYDEKRSTYLGDWYSVNW MEDSDVEDLTKETLHKQYH LVKSHNTSHVMQYGNKTISTMKVMQFQGMKRKASSPVPLPPVTHLDLTPSPDVPLTIMKRKLMNTN

## 靶点信息

研究背景	This gene encodes a cysteine protease that has a strict specificity for hydrolysis of asparaginyl bonds. This enzyme may be involved in the processing of bacterial peptides and endogenous proteins for MHC class II presentation in the lysosomal/endosomal systems. Enzyme activation is triggered by acidic pH and appears to be autocatalytic. Protein expression occurs after monocytes differentiate into dendritic cells. A fully mature, active enzyme is produced following lipopolysaccharide expression in mature dendritic cells. Overexpression of this gene may be associated with the majority of solid tumor types. This gene has a pseudogene on chromosome 13. Several alternatively spliced transcript variants have been described, but the biological validity of only two has been determined. These two variants encode the same isoform.
基因ID	5641
基因名	LGMN
Swiss	Q99538
别名	LGMN;AEP;LGMN1;PRSC1;legumain

## 产品验证



Western blot analysis of Legumain (LGMN) expressed in Mouse kidney using Legumain (LGMN) Rabbit pAb at 1:1000. Secondary antibody: HRP Goat Anti-Rabbit IgG (H+L) at 1:5000. Lysates/proteins: 30ug per lane. Blocking buffer: 5% non-fat dry milk in TBST. Detection: ECL Enhanced Kit. Exposure time: 120s.

## 实验步骤

访问官网浏览详情: [www.ablybio.cn](http://www.ablybio.cn)