

SLC6A14 Rabbit pAb

货号: **AYP12651**

产品信息

反应	Human,Mouse
宿主	Rabbit
克隆性	Polyclonal
预测反应	WB: Homo sapiens,Mus musculus
应用	WB
推荐浓度	WB: 1:500 - 1:1000
理论分子量	72kDa
实测分子量	72KDa
形式	Liquid
保存条件	Store at -20°C. Avoid freeze / thaw cycles. Buffer: PBS with 0.05% proclin300,50% glycerol,pH7.3.
偶联物	Unconjugated
阳性对照	HeLa,HepG2,MCF7,BxPC-3,Mouse large intestine,Mouse lung,Mouse testis
细胞定位	Membrane,Multi-pass membrane protein
纯化	Affinity purification

抗原信息

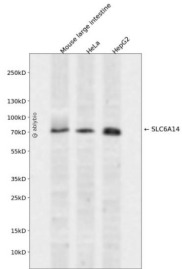
抗原信息	Recombinant fusion protein containing a sequence corresponding to amino acids 131-234 of human SLC6A14 (NP_009162.1).
序列	YYNVIIAYSLEYMFASFQSELPWKNCSWSDKNCRSPIVTHCNVSTVNGIQEIIQMNSWVDINNFTCINGSEIYQPGQLPSEQYWNKVALQRSSGMNETGV

靶点信息

研究背景	This gene encodes a member of the solute carrier family 6. Members of this family are sodium and chloride dependent neurotransmitter transporters. The encoded protein transports both neutral and cationic amino acids. This protein may also function as a beta-alanine carrier. Mutations in this gene may be associated with X-linked obesity. A pseudogene of this gene is found on chromosome X.
基因ID	11254

基因名	SLC6A14
Swiss	Q9UN76
别名	SLC6A14;BMIQ11

产品验证



Western blot analysis of SLC6A14 expressed in Mouse large intestine, HeLa, HepG2 using SLC6A14 Rabbit pAb at 1:1000. Secondary antibody: HRP Goat Anti-Rabbit IgG (H+L) at 1:5000. Lysates/proteins: 30ug per lane. Blocking buffer: 5% non-fat dry milk in TBST. Detection: ECL Enhanced Kit. Exposure time: 120 S.

实验步骤

访问官网浏览详情: www.ablybio.cn