

COL4A1 Rabbit pAb

货号: **AYP12647**

产品信息

反应	Human
宿主	Rabbit
克隆性	Polyclonal
预测反应	IHC: Sus scrofa WB: Gallus gallus
应用	WB
推荐浓度	WB: 1:500 - 1:2000
理论分子量	127kDa/160kDa
实测分子量	160kDa
形式	Liquid
保存条件	Store at -20°C. Avoid freeze / thaw cycles. Buffer: PBS with 0.01% thiomersal, 50% glycerol, pH7.3.
偶联物	Unconjugated
阳性对照	U-87 MG
细胞定位	Secreted, basement membrane, extracellular matrix, extracellular space
纯化	Affinity purification

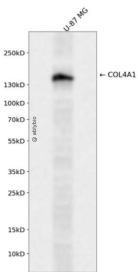
抗原信息

抗原信息	Recombinant fusion protein containing a sequence corresponding to amino acids 1445-1669 of human COL4A1 (NP_001836.2).
序列	GFLVTRHSQTIDDPQCPSGKILYHGYSLLYVQGNERAHGQDLGTAGSCLRKFSMPFLFCNINNVCFASRNDYSYWLS TPEPMPMSMAPITGENIRPFISRCVCEAPAMVMAVHSQTIQIPPCPSGWSSSLWIGYSFVMHTSAGAEGSGQALASPGSCL EEFRSAPFIECHGRGTCNYYANAYSFWLATIERSEMFKKPTPSTLKAGELRTHVSRQCVMRRT

靶点信息

研究背景	This gene encodes a type IV collagen alpha protein. Type IV collagen proteins are integral components of basement membranes. This gene shares a bidirectional promoter with a paralogous gene on the opposite strand. The protein consists of an amino-terminal 7S domain, a triple-helix forming collagenous domain, and a carboxy-terminal non-collagenous domain. It functions as part of a heterotrimer and interacts with other extracellular matrix components such as perlecan, proteoglycans, and laminins. In addition, proteolytic cleavage of the non-collagenous carboxy-terminal domain results in a biologically active fragment known as arresten, which has anti-angiogenic and tumor suppressor properties. Mutations in this gene cause porencephaly, cerebrovascular disease, and renal and muscular defects. Alternative splicing results in multiple transcript variants.
基因ID	1282
基因名	COL4A1
Swiss	P02462
别名	COL4A1;BSVD;RATOR

产品验证



Western blot analysis of COL4A1 expressed in U-87 MG using COL4A1 Rabbit pAb at 1:1000. Secondary antibody: HRP Goat Anti-Rabbit IgG (H+L) at 1:5000. Lysates/proteins: 30ug per lane. Blocking buffer: 5% non-fat dry milk in TBST. Detection: ECL Enhanced Kit. Exposure time: 120s.

实验步骤

访问官网浏览详情: www.ablybio.cn