

# MLC1 Rabbit pAb

货号: **AYP12596**

## 产品信息

反应	Human,Mouse
宿主	Rabbit
克隆性	Polyclonal
预测反应	<b>WB:</b> Homo sapiens , Rattus norvegicus
应用	<a href="#">WB</a>
推荐浓度	<b>WB:</b> 1:500 - 1:2000
理论分子量	37kDa/41kDa
实测分子量	45kDa
形式	Liquid
保存条件	Store at -20°C. Avoid freeze / thaw cycles. Buffer: PBS with 0.01% thiomersal,50% glycerol,pH7.3.
偶联物	Unconjugated
阳性对照	SH-SY5Y
细胞定位	Cell membrane,Cytoplasm,Endoplasmic reticulum,Membrane,Multi-pass membrane protein,perinuclear region
纯化	Affinity purification

## 抗原信息

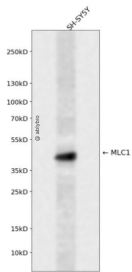
抗原信息	A synthetic peptide corresponding to a sequence within amino acids 300 to the C-terminus of human MLC 1 (NP_055981.1).
序列	SYDVLILLILLVLLQAGLNTGTAIQCVRFKVSARLQGASWDTQNGPQERLAGEVARSPKFEKAWRAVVVQMAQ

## 靶点信息

研究背景	The function of this gene product is unknown; however, homology to other proteins suggests that it may be an integral membrane transporter. Mutations in this gene have been associated with megalencephalic leukoencephalopathy with subcortical cysts, an autosomal recessive neurological disorder. Alternatively spliced transcript variants encoding different isoforms have been identified.
基因ID	23209

基因名	MLC1
Swiss	Q15049
别名	MLC1;LVM;MLC;VL

## 产品验证



Western blot analysis of MLC1 expressed in SH-SY5Y using MLC1 Rabbit pAb at 1:1000. Secondary antibody: HRP Goat Anti-Rabbit IgG (H+L) at 1:5000. Lysates/proteins: 30ug per lane. Blocking buffer: 5% non-fat dry milk in TBST. Detection: ECL Enhanced Kit. Exposure time: 120s.

## 实验步骤

访问官网浏览详情: [www.ablybio.cn](http://www.ablybio.cn)