

DLL4 Rabbit pAb

货号: **AYP12590**

产品信息

反应	Human,Mouse,Rat
宿主	Rabbit
克隆性	Polyclonal
预测反应	IHC: Rattus norvegicus WB: Rattus norvegicus
应用	WB
推荐浓度	WB: 1:500 - 1:2000
理论分子量	74kDa
实测分子量	75kDa
形式	Liquid
保存条件	Store at -20°C. Avoid freeze / thaw cycles. Buffer: PBS with 0.01% thiomersal,50% glycerol,pH7.3.
偶联物	Unconjugated
阳性对照	A-431,Rat kidney
细胞定位	Membrane,Single-pass type I membrane protein
纯化	Affinity purification

抗原信息

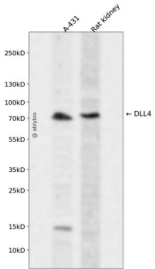
抗原信息	Recombinant fusion protein containing a sequence corresponding to amino acids 317-530 of human DLL4 (NP_061947.1).
序列	TGVDCELELSECDSNPCRNGGCKDQEDGYHCLCPPGYGLHCEHSTLSCADSPCFNNGGSCRERNQGANYACECPPNF TGSNCEKKVDRCTSNPCANGGQCLNRGPSRMCRCRPGFTGTYCELHVSDCARNPCAHHGGTCHDLENGLMCTCPAGFS GRRCEVRTSIDACASSPCFNATCYTDLSTDTFVCNCPYGFVGSRCFFPVGLPPSFPWW

靶点信息

研究背景	This gene is a homolog of the Drosophila delta gene. The delta gene family encodes Notch ligands that are characterized by a DSL domain, EGF repeats, and a transmembrane domain.
基因ID	54567

基因名	DLL4
Swiss	Q9NR61
别名	DLL4;AOS6;hdelta2

产品验证



Western blot analysis of DLL4 expressed in A-431,Rat kidney using DLL4 Rabbit pAb at 1:1000. Secondary antibody: HRP Goat Anti-Rabbit IgG (H+L) at 1:5000. Lysates/proteins: 30ug per lane. Blocking buffer: 5% non-fat dry milk in TBST. Detection: ECL Enhanced Kit. Exposure time: 120s.

实验步骤

访问官网浏览详情: www.ablybio.cn