

# ITGA8 Rabbit pAb

货号: **AYP12585**

## 产品信息

反应	Human,Mouse,Rat
宿主	Rabbit
克隆性	Polyclonal
预测反应	<b>WB:</b> Rattus norvegicus , Mus musculus
应用	<a href="#">WB</a>
推荐浓度	<b>WB:</b> 1:500 - 1:2000
理论分子量	117kDa
实测分子量	117kDa
形式	Liquid
保存条件	Store at -20°C. Avoid freeze / thaw cycles. Buffer: PBS with 0.01% thiomersal,50% glycerol,pH7.3.
偶联物	Unconjugated
阳性对照	293T,LO2,Mouse spleen,Mouse testis,Rat lung
细胞定位	Cell membrane,Membrane,Single-pass type I membrane protein
纯化	Affinity purification

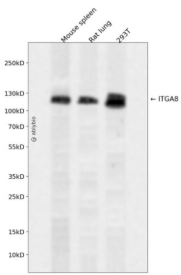
## 抗原信息

抗原信息	Recombinant fusion protein containing a sequence corresponding to amino acids 907-1000 of human ITG A8 (NP_003629.2).
序列	DVHVVEFHRQSPAKILNCTNIECLQISCAVGRLEGGESAVLKVRSRLWAHTFLQRKNDPYALASLVSEVKKMPYTDQPAK LPEGSIVIKTSVI

## 靶点信息

研究背景	Integrins are heterodimeric transmembrane receptor proteins that mediate numerous cellular processes including cell adhesion, cytoskeletal rearrangement, and activation of cell signaling pathways. Integrins are composed of alpha and beta subunits. This gene encodes the alpha 8 subunit of the heterodimeric integrin alpha8beta1 protein. The encoded protein is a single-pass type 1 membrane protein that contains multiple FG-GAP repeats. This repeat is predicted to fold into a beta propeller structure. This gene regulates the recruitment of mesenchymal cells into epithelial structures, mediates cell-cell interactions, and regulates neurite outgrowth of sensory and motor neurons. The integrin alpha8beta1 protein thus plays an important role in wound-healing and organogenesis. Mutations in this gene have been associated with renal hypodysplasia/aplasia-1 (RHDA1) and with several animal models of chronic kidney disease. Alternate splicing results in multiple transcript variants encoding distinct isoforms.
基因ID	8516
基因名	ITGA8
Swiss	P53708
别名	ITGA8

## 产品验证



Western blot analysis of ITGA8 expressed in Mouse spleen, Rat lung, 293T using ITGA8 Rabbit pAb at 1:1000. Secondary antibody: HRP Goat Anti-Rabbit IgG (H+L) at 1:5000. Lysates/proteins: 30ug per lane. Blocking buffer: 5% non-fat dry milk in TBST. Detection: ECL Enhanced Kit. Exposure time: 120s.

## 实验步骤

访问官网浏览详情: [www.ablybio.cn](http://www.ablybio.cn)