

Mitofusin 2 Rabbit pAb

货号: **AYP12564**

产品信息

反应	Human,Mouse,Rat
宿主	Rabbit
克隆性	Polyclonal
预测反应	WB: Homo sapiens , acyq
应用	WB IHC
推荐浓度	WB: 1:500 - 1:2000 IHC: 1:50 - 1:200
理论分子量	68kDa/86kDa
实测分子量	86kDa
形式	Liquid
保存条件	Store at -20°C. Avoid freeze / thaw cycles. Buffer: PBS with 0.05% proclin300,50% glycerol,pH7.3.
偶联物	Unconjugated
阳性对照	Mouse brain,Rat brain
细胞定位	Mitochondrion outer membrane,Multi-pass membrane protein
纯化	Affinity purification

抗原信息

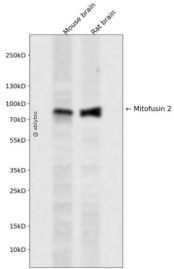
抗原信息	Recombinant fusion protein containing a sequence corresponding to amino acids 687-757 of mouse Mitofusin 2 (NP_573464.2).
序列	QVQQELSGTFAHLCQQVDITRDNLEQEIAAMNKKVEALDSLQSRAKLLRNKAGWLDSELMFTHQYLQPSR

靶点信息

研究背景	This gene encodes a mitochondrial membrane protein that participates in mitochondrial fusion and contributes to the maintenance and operation of the mitochondrial network. This protein is involved in the regulation of vascular smooth muscle cell proliferation, and it may play a role in the pathophysiology of obesity. Mutations in this gene cause Charcot-Marie-Tooth disease type 2A2, and hereditary motor and sensory neuropathy VI, which are both disorders of the peripheral nervous system. Defects in this gene have also been associated with early-onset stroke. Two transcript variants encoding the same protein have been identified.
------	--

基因ID	170731
基因名	
Swiss	
别名	MFN2;CMT2A;CMT2A2;CMT2A2A;CMT2A2B;CPRP1;HMSN6A;HSG;MARF;mitofusin-2

产品验证



Western blot analysis of Mitofusin 2 expressed in Mouse brain,Rat brain using Mitofusin 2 Rabbit pAb at 1:1000. Secondary antibody: HRP Goat Anti-Rabbit IgG (H+L) at 1:5000. Lysates/proteins: 30ug per lane. Blocking buffer: 5% non-fat dry milk in TBST. Detection: ECL Enhanced Kit. Exposure time: 120s.

实验步骤

访问官网浏览详情: www.ablybio.cn