

COMP Rabbit pAb

货号: **AYP12556**

产品信息

反应	Human,Mouse,Rat
宿主	Rabbit
克隆性	Polyclonal
预测反应	WB: Homo sapiens , Mus musculus
应用	WB IF/ICC
推荐浓度	WB: 1:500 - 1:2000 IF/ICC: 1:50 - 1:200
理论分子量	77kDa/82kDa
实测分子量	105kDa
形式	Liquid
保存条件	Store at -20°C. Avoid freeze / thaw cycles. Buffer: PBS with 0.02% sodium azide,50% glycerol,pH7.3.
偶联物	Unconjugated
阳性对照	SKOV3,LO2,U-87MG,HL-60,Mouse skeletal muscle,Rat testis
细胞定位	Secreted,extracellular matrix,extracellular space
纯化	Affinity purification

抗原信息

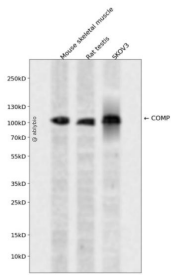
抗原信息	Recombinant fusion protein containing a sequence corresponding to amino acids 20-160 of human COMP (NP_000086.2).
序列	GQGQSPLGSDLGPQMLRELQETNAALQDVRELLRQQVREITFLKNTVMECDACGMQQSVRTGLPSVRPLLHCAPGFCFP GVACIQTESGARCGPCPAGFTGNNGSHCTDVNECNAHPCFPRVRCINTSPGFRCEACPPGYSG

靶点信息

研究背景	The protein encoded by this gene is a noncollagenous extracellular matrix (ECM) protein. It consists of five identical glycoprotein subunits, each with EGF-like and calcium-binding (thrombospondin-like) domains. Oligomerization results from formation of a five-stranded coiled coil and disulfides. Binding to other ECM proteins such as collagen appears to depend on divalent cations. Contraction or expansion of a 5 aa aspartate repeat and other mutations can cause pseudoachondroplasia (PSACH) and multiple epiphyseal dysplasia (MED).
------	---

基因ID	1311
基因名	COMP
Swiss	P49747
别名	COMP;EDM1;EPD1;MED;PSACH;THBS5;TSP5

产品验证



Western blot analysis of COMP expressed in Mouse skeletal muscle,Rat testis,SKOV3 using COMP Rabbit pAb at 1:1000. Secondary antibody: HRP Goat Anti-Rabbit IgG (H+L) at 1:5000. Lysates/proteins: 30ug per lane. Blocking buffer: 5% non-fat dry milk in TBST. Detection: ECL Enhanced Kit. Exposure time: 120s.

实验步骤

访问官网浏览详情: www.ablybio.cn