

# SLC2A9 Rabbit pAb

货号: **AYP12543**

## 产品信息

反应	Human,Mouse
宿主	Rabbit
克隆性	Polyclonal
预测反应	<b>WB:</b> Mus musculus
应用	<a href="#">WB</a>
推荐浓度	<b>WB:</b> 1:500 - 1:2000
理论分子量	55kDa/58kDa
实测分子量	55kDa
形式	Liquid
保存条件	Store at -20°C. Avoid freeze / thaw cycles. Buffer: PBS with 0.01% thiomersal,50% glycerol,pH7.3.
偶联物	Unconjugated
阳性对照	SKOV3,Mouse kidney
细胞定位	Apical cell membrane,Basolateral cell membrane,Multi-pass membrane protein,Multi-pass membrane protein
纯化	Affinity purification

## 抗原信息

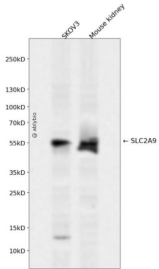
抗原信息	A synthetic peptide corresponding to a sequence within amino acids 400-500 of human SLC2A9 (NP_001001290.1).
序列	GPGGIPFILTGEFFQQSQRPAAFIAGTVNWLNSNFAVGLLFPFIQKSLDTYCFLVFATICITGAIYLYFVLPETKNRITYAEISQAF SKRNKAYPPEEKIDS

## 靶点信息

研究背景	This gene encodes a member of the SLC2A facilitative glucose transporter family. Members of this family play a significant role in maintaining glucose homeostasis. The encoded protein may play a role in the development and survival of chondrocytes in cartilage matrices. Two transcript variants encoding distinct isoforms have been identified for this gene.
基因ID	56606

基因名	SLC2A9
Swiss	Q9NRM0
别名	SLC2A9;GLUT9;GLUTX;UAQTL2;URATv1

## 产品验证



Western blot analysis of SLC2A9 expressed in SKOV3, Mouse kidney using SLC2A9 Rabbit pAb at 1:1000. Secondary antibody: HRP Goat Anti-Rabbit IgG (H+L) at 1:5000. Lysates/proteins: 30ug per lane. Blocking buffer: 5% non-fat dry milk in TBST. Detection: ECL Enhanced Kit. Exposure time: 120s.

## 实验步骤

访问官网浏览详情: [www.ablybio.cn](http://www.ablybio.cn)