

pAbPC1 Rabbit pAb

货号: **AYP12533**

产品信息

反应	Human,Mouse,Rat
宿主	Rabbit
克隆性	Polyclonal
预测反应	WB: Homo sapiens
应用	WB IHC IF/ICC
推荐浓度	WB: 1:500 - 1:1000 IHC: 1:50 - 1:100 IF/ICC: 1:50 - 1:200
理论分子量	61kDa/70kDa
实测分子量	75KDa
形式	Liquid
保存条件	Store at -20°C. Avoid freeze / thaw cycles. Buffer: PBS with 0.01% thiomersal,50% glycerol,pH7.3.
偶联物	Unconjugated
阳性对照	NIH/3T3,PC-12
细胞定位	Cytoplasm,Nucleus
纯化	Affinity purification

抗原信息

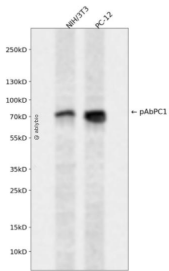
抗原信息	A synthetic peptide corresponding to a sequence within amino acids 350-450 of human PABPC1 (NP_002559.2).
序列	VTEMNGRIVATKPLYVALAQRKEERQAHLTNQYMQRMASVRAVNPVINYQPAPPSGYFMAAIPQTQNRAAYPPSQIAQLRPSRWTAQGARPHPFQNM

靶点信息

研究背景	This gene encodes a poly(A) binding protein. The protein shuttles between the nucleus and cytoplasm and binds to the 3' poly(A) tail of eukaryotic messenger RNAs via RNA-recognition motifs. The binding of this protein to poly(A) promotes ribosome recruitment and translation initiation; it is also required for poly(A) shortening which is the first step in mRNA decay. The gene is part of a small gene family including three protein-coding genes and several pseudogenes.
------	--

基因ID	26986
基因名	PABPC1
Swiss	P11940
别名	PABPC1;PAB1;PABP;PABP1;PABPC2;PABPL1

产品验证



Western blot analysis of pAbPC1 expressed in NIH/3T3,PC-12 using pAbPC1 Rabbit pAb at 1:1000. Secondary antibody: HRP Goat Anti-Rabbit IgG (H+L) at 1:5000. Lysates/proteins: 30ug per lane. Blocking buffer: 5% non-fat dry milk in TBST. Detection: ECL Enhanced Kit. Exposure time: 120s.

实验步骤

访问官网浏览详情: www.ablybio.cn