

POT1 Rabbit pAb

货号: **AYP12532**

产品信息

反应	Human,Mouse
宿主	Rabbit
克隆性	Polyclonal
预测反应	WB: Mus musculus IF: Homo sapiens
应用	WB
推荐浓度	WB: 1:200 - 1:2000
理论分子量	60kDa/71kDa
实测分子量	75kDa
形式	Liquid
保存条件	Store at -20°C. Avoid freeze / thaw cycles. Buffer: PBS with 0.02% sodium azide,50% glycerol,pH7.3.
偶联物	Unconjugated
阳性对照	A-431,HeLa,DU145,Mouse liver
细胞定位	Chromosome,Nucleus,telomere
纯化	Affinity purification

抗原信息

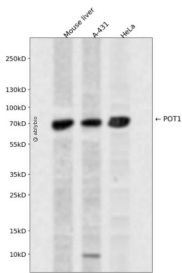
抗原信息	Recombinant fusion protein containing a sequence corresponding to amino acids 497-634 of human POT1 (NP_056265.2).
序列	TIHHYGCKQCSSLRSIQNLNSLVDKTSWIPSSVAEALGIVPLQYVFMFTLDDGTGVLEAYLMDSDKFFQIPASEVLMDD DLQKSVDMIMDMFCPPGIKIDAYPWLECFIKSYNVTNGTDNQICYQIFDTTVAEDVI

靶点信息

研究背景	This gene is a member of the telombin family and encodes a nuclear protein involved in telomere maintenance. Specifically, this protein functions as a member of a multi-protein complex that binds to the TTAGGG repeats of telomeres, regulating telomere length and protecting chromosome ends from illegitimate recombination, catastrophic chromosome instability, and abnormal chromosome segregation. Increased transcriptional expression of this gene is associated with stomach carcinogenesis and its progression. Alternatively spliced transcript variants have been described.
------	--

基因ID	25913
基因名	POT1
Swiss	Q9NUX5
别名	POT1;CMM10;GLM9;HPOT1

产品验证



Western blot analysis of POT1 expressed in Mouse liver,A-431,HeLa using POT1 Rabbit pAb at 1:1000. Secondary antibody: HRP Goat Anti-Rabbit IgG (H+L) at 1:5000. Lysates/proteins: 30ug per lane. Blocking buffer: 5% non-fat dry milk in TBST. Detection: ECL Enhanced Kit. Exposure time: 120s.

实验步骤

访问官网浏览详情: www.ablybio.cn