

— ABLYBIO, Help Your Research



# IFITM2 Rabbit pAb

货号: **AYP12530**

## 产品信息

反应	Human
宿主	Rabbit
克隆性	Polyclonal
预测反应	<b>WB:</b> Homo sapiens
应用	WB
推荐浓度	<b>WB:</b> 1:500 - 1:2000
理论分子量	14kDa
实测分子量	17kDa
形式	Liquid
保存条件	Store at -20°C. Avoid freeze / thaw cycles. Buffer: PBS with 0.01% thiomersal, 50% glycerol, pH7.3.
偶联物	Unconjugated
阳性对照	HeLa
细胞定位	Cell membrane, Single-pass membrane protein
纯化	Affinity purification

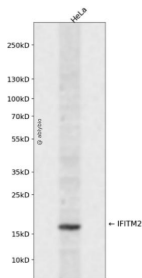
## 抗原信息

抗原信息	A synthetic peptide corresponding to a sequence within amino acids 1-100 of human IFITM2 (NP_006426.2).
------	---

## 靶点信息

研究背景	IFN-induced antiviral protein which inhibits the entry of viruses to the host cell cytoplasm, permitting endocytosis, but preventing subsequent viral fusion and release of viral contents into the cytosol. Active against multiple viruses, including influenza A virus, SARS coronaviruses (SARS-CoV and SARS-CoV-2, Marburg virus (MARV, Ebola virus (EBOV, Dengue virus (DENV, West Nile virus (WNV, human immunodeficiency virus type 1 (HIV-1, hepatitis C virus (HCV and vesicular stomatitis virus (VSV. Can inhibit: influenza virus hemagglutinin protein-mediated viral entry, MARV and EBOV GP1,2-mediated viral entry, SARS-CoV and SARS-CoV-2 S protein-mediated viral entry and VSV G protein-mediated viral entry. Induces cell cycle arrest and mediates apoptosis by caspase activation and in p53-independent manner. In hepatocytes, IFITM proteins act in a coordinated manner to restrict HCV infection by targeting the endocytosed HCV virion for lysosomal degradation. IFITM2 and IFITM3 display anti-HCV activity that may complement the anti-HCV activity of IFITM1 by inhibiting the late stages of HCV entry, possibly in a coordinated manner by trapping the virion in the endosomal pathway and targeting it for degradation at the lysosome.
基因ID	10581
基因名	IFITM2
Swiss	Q01629 ( <a href="https://www.uniprot.org/uniprotkb/Q01629/entry">https://www.uniprot.org/uniprotkb/Q01629/entry</a> )
别名	IFITM2,1-8D,DSPA2c,IFITM2 Rabbit pAb,Dispanin subfamily A member 2c,Interferon-inducible protein 1-8D

## 产品验证



Western blot analysis of IFITM2 expressed in HeLa using IFITM2 Rabbit pAb at 1:1000. Secondary antibody: HRP Goat Anti-Rabbit IgG (H+L) at 1:5000. Lysates/proteins: 30ug per lane. Blocking buffer: 5% non-fat dry milk in TBST. Detection: ECL Enhanced Kit. Exposure time: 120s.

## 实验步骤

访问官网浏览详情: [www.ablybio.cn](http://www.ablybio.cn) (<https://www.ablybio.cn/www.ablybio.cn>)