

RPS25 Rabbit pAb

货号: **AYP12525**

产品信息

反应	Human,Mouse,Rat
宿主	Rabbit
克隆性	Polyclonal
预测反应	WB: Homo sapiens , Bombyx mori Linnaeus
应用	WB IF/ICC
推荐浓度	WB: 1:200 - 1:2000 IF/ICC: 1:50 - 1:200
理论分子量	13kDa
实测分子量	14kDa
形式	Liquid
保存条件	Store at -20°C. Avoid freeze / thaw cycles. Buffer: PBS with 0.01% thiomersal,50% glycerol,pH7.3.
偶联物	Unconjugated
阳性对照	A431,BxPC-3,A549,HeLa,K-562,Mouse liver,Mouse pancreas,Rat liver
细胞定位	cytoplasm,cytosol,cytosolic ribosome,extracellular exosome,nucleolus,nucleoplasm,nucleus
纯化	Affinity purification

抗原信息

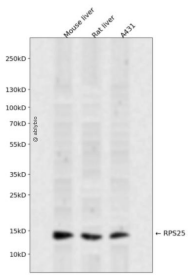
抗原信息	A synthetic peptide corresponding to a sequence within amino acids 50 to the C-terminus of human RPS25 (NP_001019.1).
序列	FDKATYDKLCKEVPNYKLITPAVVSERLKIRGSLARAALQELLSKGLIKLVSKHRAQVIYTRNTKGGDAPAAGEDA

靶点信息

研究背景	Ribosomes, the organelles that catalyze protein synthesis, consist of a small 40S subunit and a large 60S subunit. Together these subunits are composed of 4 RNA species and approximately 80 structurally distinct proteins. This gene encodes a ribosomal protein that is a component of the 40S subunit. The protein belongs to the S25E family of ribosomal proteins. It is located in the cytoplasm. As is typical for genes encoding ribosomal proteins, there are multiple processed pseudogenes of this gene dispersed through the genome.
------	--

基因ID	6230
基因名	RPS25
Swiss	P62851
别名	RPS25;S25

产品验证



Western blot analysis of RPS25 expressed in Mouse liver,Rat liver,A431 using RPS25 Rabbit pAb at 1:10 00. Secondary antibody: HRP Goat Anti-Rabbit IgG (H+L) at 1:5000. Lysates/proteins: 30ug per lane. Bl ocking buffer: 5% non-fat dry milk in TBST. Detection: ECL Enhanced Kit. Exposure time: 120s.

实验步骤

访问官网浏览详情: www.ablybio.cn