

# CPEB3 Rabbit pAb

货号: AYP12522

## 产品信息

反应	Human,Mouse,Rat
宿主	Rabbit
克隆性	Polyclonal
预测反应	<b>IHC:</b> Homo sapiens <b>WB:</b> Homo sapiens
应用	<a href="#">WB</a> <a href="#">IHC</a> <a href="#">IF/ICC</a>
推荐浓度	<b>WB:</b> 1:200 - 1:2000 <b>IHC:</b> 1:100 - 1:500 <b>IF/ICC:</b> 1:50 - 1:200
理论分子量	74kDa/76kDa
实测分子量	75kDa
形式	Liquid
保存条件	Store at -20°C. Avoid freeze / thaw cycles. Buffer: PBS with 0.01% thiomersal,50% glycerol,pH7.3.
偶联物	Unconjugated
阳性对照	Mouse heart,Mouse kidney,Rat heart
细胞定位	apical dendrite,cytoplasm,cytosol,dendrite,neuron projection,nucleoplasm,nucleus,plasma membrane,postsynaptic density,synapse
纯化	Affinity purification

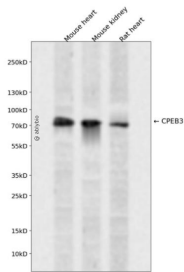
## 抗原信息

抗原信息	Recombinant fusion protein containing a sequence corresponding to amino acids 150-400 of human CPEB 3 (NP_055727.3).
序列	TFSPQIGLAQTQHHQPPPPAPAPQPAQPAQPPQAQPPQRRSPASPSQAPYAQRSAAAAYGHQPIMTSKPSSSSAVAA AAAAAASSASSWNTHQSVNAAWSAPSNPWGGLQAGRDPRAVGVGVGVGVGVPSPLNPISPLKPKFSSNVIAPPKF PRAAPLTSKSWMEDNAFRTDNGNLLPFQDRSRPYDTFNLHSLNSLMDMIRTDHEPLKKGKHYPPSGPPMSFADIMWR NHFAGRMGINFHHPGT

## 靶点信息

研究背景	Sequence-specific RNA-binding protein which acts as a translational repressor in the basal unstimulated state but, following neuronal stimulation, acts as a translational activator (By similarity. In contrast to CPEB1, does not bind to the cytoplasmic polyadenylation element (CPE, a uridine-rich sequence element with in the mRNA 3'-UTR, but binds to a U-rich loop within a stem-loop structure (By similarity. Required for the consolidation and maintenance of hippocampal-based long term memory (By similarity. In the basal state, binds to the mRNA 3'-UTR of the glutamate receptors GRIA2/GLUR2 mRNA and negatively regulates their translation (By similarity. Also represses the translation of DLG4, GRIN1, GRIN2A and GRIN2B (By similarity. When activated, acts as a translational activator of GRIA1 and GRIA2 (By similarity.
基因ID	22849
基因名	CPEB3
Swiss	Q8NE35
别名	CPEB3

## 产品验证



Western blot analysis of CPEB3 expressed in Mouse heart, Mouse kidney, Rat heart using CPEB3 Rabbit p Ab at 1:1000. Secondary antibody: HRP Goat Anti-Rabbit IgG (H+L) at 1:5000. Lysates/proteins: 30ug per lane. Blocking buffer: 5% non-fat dry milk in TBST. Detection: ECL Enhanced Kit. Exposure time: 120s

## 实验步骤

访问官网浏览详情: [www.ablybio.cn](http://www.ablybio.cn)