

ODF2 Rabbit pAb

货号: **AYP12516**

产品信息

反应	Human,Mouse,Rat
宿主	Rabbit
克隆性	Polyclonal
预测反应	WB: Homo sapiens , Mus musculus IF: Mus musculus
应用	WB IF/ICC
推荐浓度	WB: 1:500 - 1:2000 IF/ICC: 1:50 - 1:200
理论分子量	66kDa/73kDa/75kDa/80kDa/88kDa/93kDa/95kDa
实测分子量	80kDa
形式	Liquid
保存条件	Store at -20°C. Avoid freeze / thaw cycles. Buffer: PBS with 0.01% thiomersal,50% glycerol,pH7.3.
偶联物	Unconjugated
阳性对照	HepG2,Jurkat,293T,Mouse brain,Mouse lung,Mouse testis,Rat testis
细胞定位	centriolar subdistal appendage,centriole,centrosome,ciliary basal body,ciliary transition fiber,cilium,cytoplasm,nucleus,sperm flagellum,spindle pole
纯化	Affinity purification

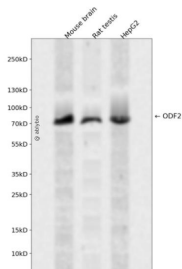
抗原信息

抗原信息	Recombinant fusion protein containing a sequence corresponding to amino acids 630-829 of human ODF 2 (NP_702911.1).
序列	IISDLRSRIEHQGDKLEMAREKHQASQKENKQLSLKVDLERKLEATSAQNIEFLQVIAKREEAIHQSQLRLEEKTRCGTLARQLESAIEDARRQVEQTKHEHALSKERAAQNKILDLETQLSRTKTELSQLRRSRDDADRRYQSRLQDLKDRLEQSESTNRS MQNYVQFLKSSYANVFGDGPYSTFLTSSPIRSRPPA

靶点信息

研究背景	The outer dense fibers are cytoskeletal structures that surround the axoneme in the middle piece and principal piece of the sperm tail. The fibers function in maintaining the elastic structure and recoil of the sperm tail as well as in protecting the tail from shear forces during epididymal transport and ejaculation. Defects in the outer dense fibers lead to abnormal sperm morphology and infertility. This gene encodes one of the major outer dense fiber proteins. Alternative splicing results in multiple transcript variants. The longer transcripts, also known as 'Cenexins', encode proteins with a C-terminal extension that are differentially targeted to somatic centrioles and thought to be crucial for the formation of microtubule organizing centers.
基因ID	4957
基因名	ODF2
Swiss	Q5BJF6
别名	ODF2;CT134;ODF2/1;ODF2/2;ODF84

产品验证



Western blot analysis of ODF2 expressed in Mouse brain,Rat testis,HepG2 using ODF2 Rabbit pAb at 1:1000. Secondary antibody: HRP Goat Anti-Rabbit IgG (H+L) at 1:5000. Lysates/proteins: 30ug per lane. Blocking buffer: 5% non-fat dry milk in TBST. Detection: ECL Enhanced Kit. Exposure time: 120s.

实验步骤

访问官网浏览详情: www.ablybio.cn