

— ABLYBIO, Help Your Research



FBLIM1 Rabbit pAb

货号: **AYP12511**

产品信息

反应	Human,Rat
宿主	Rabbit
克隆性	Polyclonal
预测反应	WB: Mus musculus
应用	WB
推荐浓度	WB: 1:500 - 1:2000
理论分子量	30kDa/40kDa
实测分子量	41kDa
形式	Liquid
保存条件	Store at -20°C. Avoid freeze / thaw cycles. Buffer: PBS with 0.01% thiomersal,50% glycerol,pH7.3.
偶联物	Unconjugated
阳性对照	Rat heart
细胞定位	Cell junction,Cytoplasm,cell cortex,cytoskeleton,focal adhesion
纯化	Affinity purification

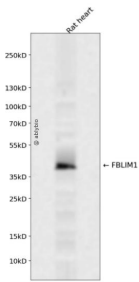
抗原信息

抗原信息	Recombinant fusion protein containing a sequence corresponding to amino acids 180-272 of human FBLIM1 (NP_060026.2).
------	--

靶点信息

研究背景	This gene encodes a protein with an N-terminal filamin-binding domain, a central proline-rich domain, and multiple C-terminal LIM domains. This protein localizes at cell junctions and may link cell adhesion structures to the actin cytoskeleton. This protein may be involved in the assembly and stabilization of actin filaments and likely plays a role in modulating cell adhesion, cell morphology and cell motility. This protein also localizes to the nucleus and may affect cardiomyocyte differentiation after binding with the CSX/NKX 2-5 transcription factor. Alternative splicing results in multiple transcript variants encoding different isoforms.
基因ID	54751
基因名	FBLIM1
Swiss	Q8WUP2 (https://www.uniprot.org/uniprotkb/Q8WUP2/entry)
别名	FBLIM1,CAL,FBLP-1,FBLP1,FBLIM1 Rabbit pAb,Migfilin,Mitogen-inducible 2-interacting protein

产品验证



Western blot analysis of FBLIM1 expressed in Rat heart using FBLIM1 Rabbit pAb at 1:1000. Secondary antibody: HRP Goat Anti-Rabbit IgG (H+L) at 1:5000. Lysates/proteins: 30ug per lane. Blocking buffer: 5% non-fat dry milk in TBST. Detection: ECL Enhanced Kit. Exposure time: 120s.

实验步骤

访问官网浏览详情: www.ablybio.cn (<https://www.ablybio.cn/www.ablybio.cn>)