

AQP2 Rabbit pAb

货号: **AYP12505**

产品信息

反应	Human,Mouse,Rat
宿主	Rabbit
克隆性	Polyclonal
预测反应	IHC: Mus musculus WB: Mus musculus
应用	WB IHC IF/ICC
推荐浓度	WB: 1:500 - 1:1000 IHC: 1:50 - 1:100 IF/ICC: 1:50 - 1:200
理论分子量	28kDa
实测分子量	26KDa
形式	Liquid
保存条件	Store at -20°C. Avoid freeze / thaw cycles. Buffer: PBS with 0.05% proclin300,50% glycerol,pH7.3.
偶联物	Unconjugated
阳性对照	293T
细胞定位	Apical cell membrane,Basolateral cell membrane,Cytoplasmic vesicle membrane,Golgi apparatus,Multi-pass membrane protein,trans-Golgi network membrane
纯化	Affinity purification

抗原信息

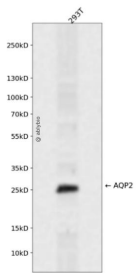
抗原信息	A synthetic peptide corresponding to a sequence within amino acids 100-200 of human AQP2 (NP_000477.1).
序列	GAALLHEITPADIRGDLAVNALSNSTTAGQAVTVLFLTLQLVLCIFASTDERRGENPGTPALSIGFSVALGHLLGIHYTGCS MNPARSLAPAVVTGKFDD

靶点信息

研究背景	This gene encodes a water channel protein located in the kidney collecting tubule. It belongs to the MIP/aquaporin family, some members of which are clustered together on chromosome 12q13. Mutations in this gene have been linked to autosomal dominant and recessive forms of nephrogenic diabetes insipidus.
------	---

基因ID	359
基因名	AQP2
Swiss	P41181
别名	AQP2;AQP-CD;WCH-CD

产品验证



Western blot analysis of AQP2 expressed in 293T using AQP2 Rabbit pAb at 1:1000. Secondary antibody: HRP Goat Anti-Rabbit IgG (H+L) at 1:5000. Lysates/proteins: 30ug per lane. Blocking buffer: 5% non-fat dry milk in TBST. Detection: ECL Enhanced Kit. Exposure time: 120s.

实验步骤

访问官网浏览详情: www.ablybio.cn