

Complement factor B (CFB) Rabbit pAb

货号: AYP12496

产品信息

反应	Human,Mouse,Rat
宿主	Rabbit
克隆性	Polyclonal
预测反应	IHC: Mus musculus WB: Rattus norvegicus IF: Rattus norvegicus
应用	WB IHC IF/ICC
推荐浓度	WB: 1:500 - 1:1000 IHC: 1:50 - 1:200 IF/ICC: 1:50 - 1:200
理论分子量	68kDa/85kDa
实测分子量	100KDa
形式	Liquid
保存条件	Store at -20°C. Avoid freeze / thaw cycles. Buffer: PBS with 0.01% thiomersal,50% glycerol,pH7.3.
偶联物	Unconjugated
阳性对照	Human plasma,Mousep plasma,Rat plasma
细胞定位	Secreted
纯化	Affinity purification

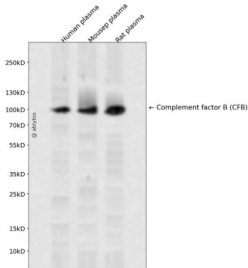
抗原信息

抗原信息	Recombinant fusion protein containing a sequence corresponding to amino acids 26-259 of Complement factor B (CFB) (NP_001701.2).
序列	TPWSLARPQGSCSLEGVEIKGGSFRLLQEGQALEYVCPSPGFYPVQTRTRCRSTGWSWSTLKTQDQKTVRKAECRAIHCPR PHDFENGEYWPRSPYYNVSDEISFHCYDGYTLRGSANRTCQVNGRWGQTAICDNGAGYCSNPGIPIGTRKVGVSQYRLE DSVTYHCSRGLTLRGSQRRTCQEGGSWSGTEPSCQDSFMYDTPQEVAEAFLLSSTETIEGVDAEDGHGPGEQQKR

靶点信息

研究背景	This gene encodes complement factor B, a component of the alternative pathway of complement activation. Factor B circulates in the blood as a single chain polypeptide. Upon activation of the alternative pathway, it is cleaved by complement factor D yielding the noncatalytic chain Ba and the catalytic subunit Bb. The active subunit Bb is a serine protease which associates with C3b to form the alternative pathway C3 convertase. Bb is involved in the proliferation of preactivated B lymphocytes, while Ba inhibits their proliferation. This gene localizes to the major histocompatibility complex (MHC) class III region on chromosome 6. This cluster includes several genes involved in regulation of the immune reaction. Polymorphisms in this gene are associated with a reduced risk of age-related macular degeneration. The polyadenylation site of this gene is 421 bp from the 5' end of the gene for complement component 2.
基因ID	629
基因名	CFB
Swiss	P00751
别名	CFB;AHUS4;ARMD14;BF;BFD;CFAB;CFBD;FB;FBI12;GBG;H2-Bf;PBF2

产品验证



Western blot analysis of Complement factor B (CFB) expressed in Human plasma, Mouse plasma, Rat plasma using Complement factor B (CFB) Rabbit pAb at 1:1000. Secondary antibody: HRP Goat Anti-Rabbit IgG (H+L) at 1:5000. Lysates/proteins: 30ug per lane. Blocking buffer: 5% non-fat dry milk in TBST. Detection: ECL Enhanced Kit. Exposure time: 120s.

实验步骤

访问官网浏览详情: www.ablybio.cn