

# MX1 Rabbit pAb

货号: **AYP12492**

## 产品信息

反应	Human,Mouse
宿主	Rabbit
克隆性	Polyclonal
预测反应	<b>WB:</b> Dragon Li cats , Homo sapiens
应用	<a href="#">WB</a> <a href="#">IHC</a> <a href="#">IF/ICC</a>
推荐浓度	<b>WB:</b> 1:500 - 1:1000 <b>IHC:</b> 1:50 - 1:200 <b>IF/ICC:</b> 1:50 - 1:200
理论分子量	55kDa/75kDa
实测分子量	76KDa
形式	Liquid
保存条件	Store at -20°C. Avoid freeze / thaw cycles. Buffer: PBS with 0.05% proclin300,50% glycerol,pH7.3.
偶联物	Unconjugated
阳性对照	Daudi
细胞定位	Cytoplasm,Cytoplasmic side,Endoplasmic reticulum membrane,Nucleus,Peripheral membrane protein,perinuclear region
纯化	Affinity purification

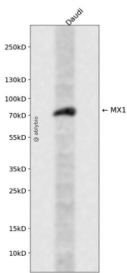
## 抗原信息

抗原信息	Recombinant fusion protein containing a sequence corresponding to amino acids 368-662 of human MX1 (NP_001171517.1).
序列	ENEKMFFLIDKVNFAFNQDITALMQGEETVGEEDIRLFTRLRHEFHKWSTIIENNFQEGHKILSRKIQKFENQYRGRELPGFVN YRTFETIVKQIKALEEPAVDMLHTVTDMVRLAFTDVSIKNFEEFFNLHRTAKSKIEDIRAEQEREKEGLIRLHFQMEQIVYCQ DQVYRGALQKVREKELEEEKKKKSWDFGAFQSSSATDSSMEEIFQHLMAYHQEASKRISSHIPLIIQFFMLQTYGQQLQKA MLQLLQDKDTYSWLLKERSDTSKRFKFLKERLARLTQARRRLAQFPG

## 靶点信息

研究背景	This gene encodes a guanosine triphosphate (GTP)-metabolizing protein that participates in the cellular antiviral response. The encoded protein is induced by type I and type II interferons and antagonizes the replication process of several different RNA and DNA viruses. There is a related gene located adjacent to this gene on chromosome 21, and there are multiple pseudogenes located in a cluster on chromosome 4. Alternative splicing results in multiple transcript variants.
基因ID	4599
基因名	MX1
Swiss	P20591
别名	MX1;IFI-78K;IFI78;MX;MxA

## 产品验证



Western blot analysis of MX1 expressed in Daudi using MX1 Rabbit pAb at 1:1000. Secondary antibody: HRP Goat Anti-Rabbit IgG (H+L) at 1:5000. Lysates/proteins: 30ug per lane. Blocking buffer: 5% non-fat dry milk in TBST. Detection: ECL Enhanced Kit. Exposure time: 120s.

## 实验步骤

访问官网浏览详情: [www.ablybio.cn](http://www.ablybio.cn)