

SDC2 Rabbit pAb

货号: **AYP12489**

产品信息

反应	Human,Mouse
宿主	Rabbit
克隆性	Polyclonal
预测反应	IHC: Homo sapiens , Rattus norvegicus
应用	WB IHC
推荐浓度	WB: 1:500 - 1:2000 IHC: 1:50 - 1:200
理论分子量	22kDa
实测分子量	50kDa
形式	Liquid
保存条件	Store at -20°C. Avoid freeze / thaw cycles. Buffer: PBS with 0.02% sodium azide,50% glycerol,pH7.3.
偶联物	Unconjugated
阳性对照	HeLa
细胞定位	Membrane,Single-pass type I membrane protein
纯化	Affinity purification

抗原信息

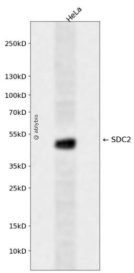
抗原信息	Recombinant fusion protein containing a sequence corresponding to amino acids 19-144 of human SDC2 (NP_002989.2).
序列	ESRAELTSKDMYLDNSSIIEASGVYPIDDDDDYASASGSGADEDVESPELTTSRPLPKILLTSAAPKVETTTLNIQNKIPAQT KSPEETDKKEVHLSDSERKMDPAEEDTNVYTEKHSDSLFKRTE

靶点信息

研究背景	The protein encoded by this gene is a transmembrane (type I) heparan sulfate proteoglycan and is a member of the syndecan proteoglycan family. The syndecans mediate cell binding, cell signaling, and cytoskeletal organization and syndecan receptors are required for internalization of the HIV-1 tat protein. The syndecan-2 protein functions as an integral membrane protein and participates in cell proliferation, cell migration and cell-matrix interactions via its receptor for extracellular matrix proteins. Altered syndecan-2 expression has been detected in several different tumor types.
------	---

基因ID	6383
基因名	SDC2
Swiss	P34741
别名	SDC2;CD362;HSPG;HSPG1;SYND2

产品验证



Western blot analysis of SDC2 expressed in HeLa using SDC2 Rabbit pAb at 1:1000. Secondary antibody: HRP Goat Anti-Rabbit IgG (H+L) at 1:5000. Lysates/proteins: 30ug per lane. Blocking buffer: 5% non-fat dry milk in TBST. Detection: ECL Enhanced Kit. Exposure time: 120s.

实验步骤

访问官网浏览详情: www.ablybio.cn