

C1QA Rabbit pAb

货号: **AYP12485**

产品信息

反应	Human,Mouse,Rat
宿主	Rabbit
克隆性	Polyclonal
预测反应	WB: Mus musculus
应用	WB
推荐浓度	WB: 1:500 - 1:2000
理论分子量	26kDa
实测分子量	25kDa
形式	Liquid
保存条件	Store at -20°C. Avoid freeze / thaw cycles. Buffer: PBS with 0.05% proclin300,50% glycerol,pH7.3.
偶联物	Unconjugated
阳性对照	Mouse lung,Mouse liver
细胞定位	Secreted
纯化	Affinity purification

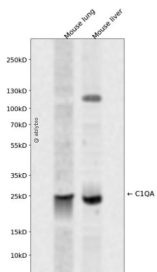
抗原信息

抗原信息	Recombinant fusion protein containing a sequence corresponding to amino acids 23-245 of human C1QA (NP_057075.1).
序列	EDLCRAPDGKKGEAGRPRRRGRPLKGEQGEPEGAPGIRTGIQGLKGDQGEPPSGNPGKVGYPGPGSPLGARGIPGIKGTKGSPGNIKDQPRPAFSAIRRNPPMGGNVVIFDTVITNQEEPYNHSGRFVCTVPGYYFTFQVLSQWEICLSIVSSSRGQVRRSLGFCDDTTNKGLFQVVSGGMVLQLQQGDQVWVEKDPKKGHIYQGSEADSVFSGFLIFPSA

靶点信息

研究背景	This gene encodes a major constituent of the human complement subcomponent C1q. C1q associates with C1r and C1s in order to yield the first component of the serum complement system. Deficiency of C1q has been associated with lupus erythematosus and glomerulonephritis. C1q is composed of 18 polypeptide chains: six A-chains, six B-chains, and six C-chains. Each chain contains a collagen-like region located near the N terminus and a C-terminal globular region. The A-, B-, and C-chains are arranged in the order A-C-B on chromosome 1. This gene encodes the A-chain polypeptide of human complement subcomponent C1q.
基因ID	712
基因名	C1QA
Swiss	P02745
别名	C1QA

产品验证



Western blot analysis of C1QA expressed in Mouse lung, Mouse liver using C1QA Rabbit pAb at 1:1000. Secondary antibody: HRP Goat Anti-Rabbit IgG (H+L) at 1:5000. Lysates/proteins: 30ug per lane. Blocking buffer: 5% non-fat dry milk in TBST. Detection: ECL Enhanced Kit. Exposure time: 120s.

实验步骤

访问官网浏览详情: www.ablybio.cn