

# PSMD2 Rabbit pAb

货号: **AYP12476**

## 产品信息

反应	Human,Mouse
宿主	Rabbit
克隆性	Polyclonal
预测反应	<b>WB:</b> Homo sapiens , Mus musculus <b>IF:</b> Mus musculus
应用	<a href="#">WB</a> <a href="#">IF/ICC</a>
推荐浓度	<b>WB:</b> 1:500 - 1:2000 <b>IF/ICC:</b> 1:50 - 1:200
理论分子量	82kDa/85kDa/100kDa
实测分子量	108kDa
形式	Liquid
保存条件	Store at -20°C. Avoid freeze / thaw cycles. Buffer: PBS with 0.02% sodium azide,50% glycerol,pH7.3.
偶联物	Unconjugated
阳性对照	SW480,OVCAR3,M21,U-937,SH-SY5Y,Mouse testis,Mouse heart,Mouse liver
细胞定位	cytosol,extracellular exosome,extracellular region,nucleoplasm,nucleus,proteasome storage granule
纯化	Affinity purification

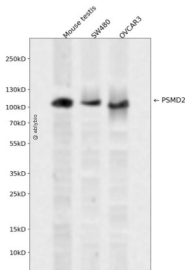
## 抗原信息

抗原信息	Recombinant fusion protein containing a sequence corresponding to amino acids 1-260 of human PSMD2 (NP_002799.3).
序列	MEEGGRDKAPVQPQSPAAAPGGTDEKPSGKERRDAGDKDKEQELSEEDKQLQDELEMLVERLGEKDTSLYRPALEEL RRQIRSSSTTSMTSVPKPLKFLRPHYGKLKEIYENMAPGENKRFAADIISVLAMTMSGERECLKYRLVGSQEELASWGHEYVR HLAGEVAKIEWQELDDAEKVQREPLLLTVKEIVPYNMAHNAEHEACDLLMEIEQVDMLEKDIDENAYAKVCLYLTSCVNYVP EPENSALLRCALGVFRKFS

## 靶点信息

研究背景	The 26S proteasome is a multicatalytic proteinase complex with a highly ordered structure composed of 2 complexes, a 20S core and a 19S regulator. The 20S core is composed of 4 rings of 28 non-identical subunits; 2 rings are composed of 7 alpha subunits and 2 rings are composed of 7 beta subunits. The 19S regulator is composed of a base, which contains 6 ATPase subunits and 2 non-ATPase subunits, and a lid, which contains up to 10 non-ATPase subunits. Proteasomes are distributed throughout eukaryotic cells at a high concentration and cleave peptides in an ATP/ubiquitin-dependent process in a non-lysosomal pathway. An essential function of a modified proteasome, the immunoproteasome, is the processing of class I MHC peptides. This gene encodes one of the non-ATPase subunits of the 19S regulator lid. In addition to participation in proteasome function, this subunit may also participate in the TNF signalling pathway since it interacts with the tumor necrosis factor type 1 receptor. A pseudogene has been identified on chromosome 1. Alternative splicing results in multiple transcript variants of this gene.
基因ID	5708
基因名	PSMD2
Swiss	Q13200
别名	PSMD2;P97;RPN1;S2;TRAP2

## 产品验证



Western blot analysis of PSMD2 expressed in Mouse testis, SW480, OVCAR3 using PSMD2 Rabbit pAb at 1:1000. Secondary antibody: HRP Goat Anti-Rabbit IgG (H+L) at 1:5000. Lysates/proteins: 30ug per lane. Blocking buffer: 5% non-fat dry milk in TBST. Detection: ECL Enhanced Kit. Exposure time: 120s.

## 实验步骤

访问官网浏览详情: [www.ablybio.cn](http://www.ablybio.cn)