

SELENOM Rabbit pAb

货号: **AYP12468**

产品信息

反应	Human,Mouse
宿主	Rabbit
克隆性	Polyclonal
预测反应	WB: Sus scrofa , Gallus gallus
应用	WB
推荐浓度	WB: 1:500 - 1:2000
理论分子量	16kDa
实测分子量	16kDa
形式	Liquid
保存条件	Store at -20°C. Avoid freeze / thaw cycles. Buffer: PBS with 0.01% thiomersal,50% glycerol,pH7.3.
偶联物	Unconjugated
阳性对照	Raji,A-431,Mouse kidney,Mouse heart,Mouse brain
细胞定位	endoplasmic reticulum lumen,Golgi apparatus,perinuclear region of cytoplasm
纯化	Affinity purification

抗原信息

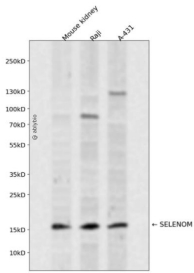
抗原信息	Recombinant fusion protein containing a sequence corresponding to amino acids 50-130 of human SELENOM (NP_536355.1).
序列	LNRLKEVKAFVTQDIPFYHNLVMKHLPGADPELVLLGRRYEELERIPLEMTREEINALVQELGFYRKAAPDAQVPEYVW

靶点信息

研究背景	The protein encoded by this gene belongs to the selenoprotein M/SEP15 family. The exact function of this protein is not known. It is localized in the perinuclear region, is highly expressed in the brain, and may be involved in neurodegenerative disorders. Transgenic mice with targeted deletion of this gene exhibit increased weight gain, suggesting a role for this gene in the regulation of body weight and energy metabolism. This protein is a selenoprotein, containing the rare amino acid selenocysteine (Sec). Sec is encoded by the UGA codon, which normally signals translation termination. The 3' UTRs of selenoprotein mRNAs contain a conserved stem-loop structure, designated the Sec insertion sequence (SECIS) element, that is necessary for the recognition of UGA as a Sec codon, rather than as a stop signal.
------	---

基因ID	140606
基因名	SELENOM
Swiss	Q8WWX9
别名	SELENOM;SELM;SEPM

产品验证



Western blot analysis of SELENOM expressed in Mouse kidney, Raji, A-431 using SELENOM Rabbit pAb at 1:1000. Secondary antibody: HRP Goat Anti-Rabbit IgG (H+L) at 1:5000. Lysates/proteins: 30ug per lane. Blocking buffer: 5% non-fat dry milk in TBST. Detection: ECL Enhanced Kit. Exposure time: 120s.

实验步骤

访问官网浏览详情: www.ablybio.cn