

Heparanase 1 Rabbit pAb

货号: **AYP12464**

产品信息

反应	Human,Mouse,Rat
宿主	Rabbit
克隆性	Polyclonal
预测反应	IHC: Homo sapiens WB: Mus musculus
应用	WB IHC IF/ICC
推荐浓度	WB: 1:500 - 1:2000 IHC: 1:50 - 1:200 IF/ICC: 1:50 - 1:200
理论分子量	42kDa/53kDa/54kDa/61kDa
实测分子量	50kDa/65kDa
形式	Liquid
保存条件	Store at -20°C. Avoid freeze / thaw cycles. Buffer: PBS with 0.01% thiomersal,50% glycerol,pH7.3.
偶联物	Unconjugated
阳性对照	Jurkat,BxPC-3,A-431,mouse spleen,mouse lung,rat spleen,rat lung
细胞定位	Lysosome membrane,Nucleus,Peripheral membrane protein,Secreted
纯化	Affinity purification

抗原信息

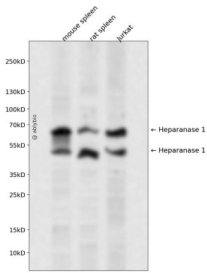
抗原信息	Recombinant protein of human Heparanase 1
序列	

靶点信息

研究背景	Heparan sulfate proteoglycans are major components of the basement membrane and extracellular matrix. The protein encoded by this gene is an enzyme that cleaves heparan sulfate proteoglycans to permit cell movement through remodeling of the extracellular matrix. In addition, this cleavage can release bioactive molecules from the extracellular matrix. Several transcript variants encoding different isoforms have been found for this gene.
------	---

基因ID	10855
基因名	HPSE
Swiss	Q9Y251
别名	HPSE;HPA;HPA1;HPR1;HPSE1;HSE1;heparanase

产品验证



Western blot analysis of Heparanase 1 expressed in mouse spleen, rat spleen, Jurkat using Heparanase 1 Rabbit pAb at 1:1000. Secondary antibody: HRP Goat Anti-Rabbit IgG (H+L) at 1:5000. Lysates/proteins: 30ug per lane. Blocking buffer: 5% non-fat dry milk in TBST. Detection: ECL Enhanced Kit. Exposure time: 120s.

实验步骤

访问官网浏览详情: www.ablybio.cn