

PSMD1 Rabbit pAb

货号: **AYP12463**

产品信息

反应	Human,Mouse,Rat
宿主	Rabbit
克隆性	Polyclonal
预测反应	WB: Homo sapiens
应用	WB
推荐浓度	WB: 1:500 - 1:2000
理论分子量	102kDa/105kDa
实测分子量	106kDa
形式	Liquid
保存条件	Store at -20°C. Avoid freeze / thaw cycles. Buffer: PBS with 0.01% thiomersal,50% glycerol,pH7.3.
偶联物	Unconjugated
阳性对照	293T,HeLa,Jurkat
细胞定位	cytosol,extracellular region,nucleoplasm,nucleus,proteasome storage granule
纯化	Affinity purification

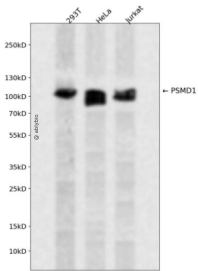
抗原信息

抗原信息	Recombinant fusion protein containing a sequence corresponding to amino acids 794-953 of human PSM D1 (NP_002798.2).
序列	DLKMPKVQYKSNCKPSTFAYPAPLEVPKKEKEKVVSTAVLSITAKAKKKEKEKEKEEKEMEVDEAEKKEEKKKEPEPNF QLLDNPARVMPAQLKVLTPETCRYQPFKPLSIGGIILKDTSEDIEELVEPVAAHGPKIEEEEQEPEPPEPFYIDD

靶点信息

研究背景	The 26S proteasome is a multicatalytic proteinase complex with a highly ordered structure composed of 2 complexes, a 20S core and a 19S regulator. The 20S core is composed of 4 rings of 28 non-identical sub units; 2 rings are composed of 7 alpha subunits and 2 rings are composed of 7 beta subunits. The 19S regulator is composed of a base, which contains 6 ATPase subunits and 2 non-ATPase subunits, and a lid, which contains up to 10 non-ATPase subunits. Proteasomes are distributed throughout eukaryotic cells at a high concentration and cleave peptides in an ATP/ubiquitin-dependent process in a non-lysosomal pathway. An essential function of a modified proteasome, the immunoproteasome, is the processing of class I MHC peptides. This gene encodes the largest non-ATPase subunit of the 19S regulator lid, which is responsible for substrate recognition and binding. Alternatively spliced transcript variants have been found for this gene.
基因ID	5707
基因名	PSMD1
Swiss	Q99460
别名	PSMD1;P112;Rpn2;S1

产品验证



Western blot analysis of PSMD1 expressed in 293T, HeLa, Jurkat using PSMD1 Rabbit pAb at 1:1000. Secondary antibody: HRP Goat Anti-Rabbit IgG (H+L) at 1:5000. Lysates/proteins: 30ug per lane. Blocking buffer: 5% non-fat dry milk in TBST. Detection: ECL Enhanced Kit. Exposure time: 120s.

实验步骤

访问官网浏览详情: www.ablybio.cn