

PP2A-B55 α /PR55 α /PPP2R2A Rabbit pAb

货号: AYP12450

产品信息

反应	Human,Mouse,Rat
宿主	Rabbit
克隆性	Polyclonal
预测反应	WB: Homo sapiens
应用	WB IHC
推荐浓度	WB: 1:500 - 1:2000 IHC: 1:50 - 1:200
理论分子量	51kDa/53kDa
实测分子量	52kDa
形式	Liquid
保存条件	Store at -20°C. Avoid freeze / thaw cycles. Buffer: PBS with 0.02% sodium azide,50% glycerol,pH7.3.
偶联物	Unconjugated
阳性对照	Jurkat,Mouse brain
细胞定位	cytosol,glutamatergic synapse,nucleoplasm
纯化	Affinity purification

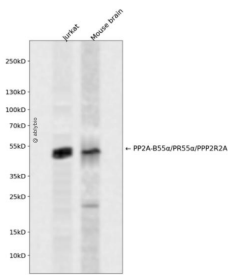
抗原信息

抗原信息	Recombinant fusion protein containing a sequence corresponding to amino acids 1-447 of human PP2A-B55 α /PR55 α /PPP2R2A (NP_002708.1).
序列	MAGAGGGNDIQWCFQVKGAVDDDDVAEADIISTVEFNHSGELLATGDKGGRVVIFQQEQENKIQSHSRGEYNVYSTFQ SHEPEFDYLSLEIEEKINKIRWLPQKNAAQFLLSTNDKTIKWKISERDKRPEGYNLKEEDGRYRDPTTVTTLRVPVFRPMD LMVEASPRRIFANAHTYHINSISINSYDITYLSADDLRINLWHLEITDRSFNIVDIKIPANMEELTEVITAAEFHPNSCNTFVYSS SKGTIRLCDMRASALCDRHSKLFEEPEDPSNRSFFSEIISISDVKFSHSGRYMMTRDYLSVKIWDLNENRNPVETYQVHE YLRSKLCSLYENDCIFDKFECCWNGSDSVVMTGSYNNFFRMFDRNTKRDITLEASRENNKPRTVLKPRKVCASGKRKKDE ISVDSLDFNKKILHTAWHPKENIIVATTNNLYIFQDKVN

靶点信息

研究背景	The product of this gene belongs to the phosphatase 2 regulatory subunit B family. Protein phosphatase 2 is one of the four major Ser/Thr phosphatases, and it is implicated in the negative control of cell growth and division. It consists of a common heteromeric core enzyme, which is composed of a catalytic subunit and a constant regulatory subunit, that associates with a variety of regulatory subunits. The B regulatory subunit might modulate substrate selectivity and catalytic activity. This gene encodes an alpha isoform of the regulatory subunit B55 subfamily. Alternatively spliced transcript variants have been described.
基因ID	5520
基因名	PPP2R2A
Swiss	P63151
别名	PPP2R2A;B55A;B55ALPHA;PR52A;PR55A;PR55alpha

产品验证



Western blot analysis of PP2A-B55 α /PR55 α /PPP2R2A expressed in Jurkat, Mouse brain using PP2A-B55 α /PR55 α /PPP2R2A Rabbit pAb at 1:1000. Secondary antibody: HRP Goat Anti-Rabbit IgG (H+L) at 1:5000. Lysates/proteins: 30ug per lane. Blocking buffer: 5% non-fat dry milk in TBST. Detection: E CL Enhanced Kit. Exposure time: 120s.

实验步骤

访问官网浏览详情: www.ablybio.cn