

EEF1A2 Rabbit pAb

货号: **AYP12441**

产品信息

反应	Human,Mouse,Rat
宿主	Rabbit
克隆性	Polyclonal
预测反应	WB: Mus musculus IHC: Homo sapiens
应用	WB
推荐浓度	WB: 1:500 - 1:2000
理论分子量	50kDa
实测分子量	50kDa
形式	Liquid
保存条件	Store at -20°C. Avoid freeze / thaw cycles. Buffer: PBS with 0.02% sodium azide,50% glycerol,pH7.3.
偶联物	Unconjugated
阳性对照	BT-474,MCF7,293T,NCI-H460,Mouse brain,Mouse heart,Mouse skeletal muscle,Rat heart,Rat skeletal muscle
细胞定位	Nucleus
纯化	Affinity purification

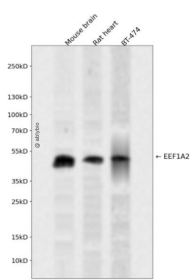
抗原信息

抗原信息	Recombinant fusion protein containing a sequence corresponding to amino acids 184-463 of human EEF1A2 (NP_001949.1).
序列	NPATVPFVPISGWHGDNMLESPNMPWFKGWKVERKEGNASGVSLLLEALDTILPPTRPDKPLRLPLQDVYKIGGIGTVPVGRVETGILRPGMVVTFAPVNITTEVKSVMHHEALSEALPGDNVGFNVKNVSVKDIRRGNVCGDSKSDPPQEAQAQFTSQV IILNHPGQISAGYSPVIDCHTAHIACKFAELKEIDRRSGKKLEDNPKSLKSGDAAIVEMVPGKPMCVESFSQYPPLGRFAVRDMRQTVAVGVIKNVEKKSGGAGKVTKSAQKAQKAGK

靶点信息

研究背景	This gene encodes an isoform of the alpha subunit of the elongation factor-1 complex, which is responsible for the enzymatic delivery of aminoacyl tRNAs to the ribosome. This isoform (alpha 2) is expressed in brain, heart and skeletal muscle, and the other isoform (alpha 1) is expressed in brain, placenta, lung, liver, kidney, and pancreas. This gene may be critical in the development of ovarian cancer.
基因ID	1917
基因名	EEF1A2
Swiss	Q05639
别名	EEF1A2;EEF1AL;EF-1-alpha-2;EF1A;EIEE33;HS1;MRD38;STN;STNL

产品验证



Western blot analysis of EEF1A2 expressed in Mouse brain,Rat heart,BT-474 using EEF1A2 Rabbit pAb at 1:1000. Secondary antibody: HRP Goat Anti-Rabbit IgG (H+L) at 1:5000. Lysates/proteins: 30ug per lane. Blocking buffer: 5% non-fat dry milk in TBST. Detection: ECL Enhanced Kit. Exposure time: 120s.

实验步骤

访问官网浏览详情: www.ablybio.cn