

# MEK6 Rabbit pAb

货号: AYP12433

### 产品信息

反应	Human,Mouse,Rat
宿主	Rabbit
克隆性	Polyclonal
预测反应	<b>WB:</b> Oryza sativa , Sus scrofa
应用	<a href="#">WB</a> <a href="#">IF/ICC</a>
推荐浓度	<b>WB:</b> 1:500 - 1:2000 <b>IF/ICC:</b> 1:50 - 1:200
理论分子量	31kDa/37kDa
实测分子量	37kDa
形式	Liquid
保存条件	Store at -20°C. Avoid freeze / thaw cycles. Buffer: PBS with 0.02% sodium azide,50% glycerol,pH7.3.
偶联物	Unconjugated
阳性对照	HeLa
细胞定位	Cytoplasm,Nucleus,cytoskeleton
纯化	Affinity purification

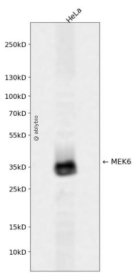
### 抗原信息

抗原信息	Recombinant fusion protein containing a sequence corresponding to amino acids 1-334 of human MEK6 (NP_002749.2).
序列	MSQSKGKKRNPGLKIPKEAFEQPQTSSTPPRDLDKACISIGNQNFEVKADDLEPIMELGRGAYGVVEKMRHVPSGQIMAVKRIRATVNSQEQKRLMDLDISMRTVDCPFTVTFYGALFREGDVWICMELMDTSLDKFYKQVIDKGGQTIPEDILGKIAVSI VKALEHLHSLKLSVIHRDVKPSNVLINALGQVKMCDGFIGYLVDSVAKTIDAGCKPYMAPERINPELNQKGYSVKSDIWSL GITMIELAILRFPYDSWGTPFQQLKQVVEEPPQLPADKFSAEFVDFTSQCLKKNKERPTYPELMQHPFFTLHESKGTDVA SFVKLILGD

### 靶点信息

研究背景	This gene encodes a member of the dual specificity protein kinase family, which functions as a mitogen-activated protein (MAP) kinase kinase. MAP kinases, also known as extracellular signal-regulated kinases (ERKs), act as an integration point for multiple biochemical signals. This protein phosphorylates and activates p38 MAP kinase in response to inflammatory cytokines or environmental stress. As an essential component of p38 MAP kinase mediated signal transduction pathway, this gene is involved in many cellular processes such as stress induced cell cycle arrest, transcription activation and apoptosis.
基因ID	5608
基因名	MAP2K6
Swiss	P52564
别名	MAP2K6;MAPKK6;MEK6;MKK6;PRKMK6;SAPKK-3;SAPKK3

## 产品验证



Western blot analysis of MEK6 expressed in HeLa using MEK6 Rabbit pAb at 1:1000. Secondary antibody: HRP Goat Anti-Rabbit IgG (H+L) at 1:5000. Lysates/proteins: 30ug per lane. Blocking buffer: 5% non-fat dry milk in TBST. Detection: ECL Enhanced Kit. Exposure time: 120s.

## 实验步骤

访问官网浏览详情: [www.ablybio.cn](http://www.ablybio.cn)