

GPC6 Rabbit pAb

货号: **AYP12428**

产品信息

反应	Human,Mouse
宿主	Rabbit
克隆性	Polyclonal
预测反应	WB: Rattus norvegicus
应用	WB IHC IF/ICC
推荐浓度	WB: 1:500 - 1:1000 IHC: 1:50 - 1:200 IF/ICC: 1:50 - 1:200
理论分子量	62kDa
实测分子量	63kDa
形式	Liquid
保存条件	Store at -20°C. Avoid freeze / thaw cycles. Buffer: PBS with 0.02% sodium azide,50% glycerol,pH7.3.
偶联物	Unconjugated
阳性对照	293T,HeLa
细胞定位	Cell membrane,Extracellular side,GPI-anchor,Lipid-anchor,Secreted,extracellular space
纯化	Affinity purification

抗原信息

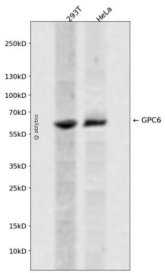
抗原信息	Recombinant fusion protein containing a sequence corresponding to amino acids 320-530 of human GPC6 (NP_005699.1).
序列	SEAIMNMQENSMQVS AKVFQGCGQPAPALRSARSAPENFNTRFRPYNPEERPTTAAGTSLDRLVTDIKEKLLSKKVV SALPYTICKDESVTAGTSNEEECWNGHSKARYLPEIMNDGLTNQINNPEVDVDITRPDTFIRQQIMALRVMTNKLKNAYNG NDVNFQDTSDESSGSGSGSGCMDDVCPTEFEFVTTEAPAVDPDRREVDSS

靶点信息

研究背景	The glypicans comprise a family of glycosylphosphatidylinositol-anchored heparan sulfate proteoglycans, and they have been implicated in the control of cell growth and cell division. The glypican encoded by this gene is a putative cell surface coreceptor for growth factors, extracellular matrix proteins, proteases and anti-proteases.
------	---

基因ID	10082
基因名	GPC6
Swiss	Q9Y625
别名	GPC6;OMIMD1

产品验证



Western blot analysis of GPC6 expressed in 293T, HeLa using GPC6 Rabbit pAb at 1:1000. Secondary antibody: HRP Goat Anti-Rabbit IgG (H+L) at 1:5000. Lysates/proteins: 30ug per lane. Blocking buffer: 5% non-fat dry milk in TBST. Detection: ECL Enhanced Kit. Exposure time: 120s.

实验步骤

访问官网浏览详情: www.ablybio.cn