

RAB18 Rabbit pAb

货号: AYP12423

产品信息

反应	Human,Mouse,Rat
宿主	Rabbit
克隆性	Polyclonal
预测反应	IP: Mus musculus WB: Mus musculus
应用	WB
推荐浓度	WB: 1:500 - 1:2000
理论分子量	15kDa/22kDa/26kDa
实测分子量	23kDa
形式	Liquid
保存条件	Store at -20°C. Avoid freeze / thaw cycles. Buffer: PBS with 0.02% sodium azide,50% glycerol,pH7.3.
偶联物	Unconjugated
阳性对照	SH-SY5Y,A375,293T,MCF7,Mouse liver,Mouse kidney,Rat liver
细胞定位	Cell membrane,Cytoplasmic side,Lipid-anchor
纯化	Affinity purification

抗原信息

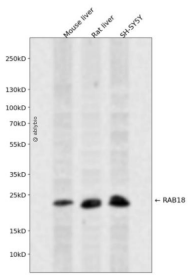
抗原信息	Recombinant fusion protein containing a sequence corresponding to amino acids 1-206 of human RAB18 (NP_067075.1).
序列	MDDEDVLTTLKILIGESGVGKSSLLLRFTDDTFDPELAATIGVDFKVKTISVDGNKAKLAIWDTAGQERFRTLTPSYRGAQ GVILVYDVTRRDTFVKLDNLNELETYCTRNDIVNMLVGNKIDKENREVDNRNEGLKFARKHSMLFIEASAKTCDGVQCAFE ELVEKIIQTPGLWESENQNKGVKLSHREEGQGGGACGGYCSVL

靶点信息

研究背景	The protein encoded by this gene is a member of a family of Ras-related small GTPases that regulate membrane trafficking in organelles and transport vesicles. Knockdown studies in zebrafish suggest that this protein may have a role in eye and brain development. Mutations in this gene are associated with Warburg micro syndrome type 3. Alternatively spliced transcript variants have been found for this gene.
------	--------------------------------------------------------------------------------------------------------------------------------------------------------------------------------------------------------------------------------------------------------------------------------------------------------------------------------------------------------------------------------------------------------------------------

基因ID	22931
基因名	RAB18
Swiss	Q9NP72
别名	RAB18;RAB18LI1;WARBM3

产品验证



Western blot analysis of RAB18 expressed in Mouse liver,Rat liver,SH-SY5Y using RAB18 Rabbit pAb at 1:1000. Secondary antibody: HRP Goat Anti-Rabbit IgG (H+L) at 1:5000. Lysates/proteins: 30ug per lane. Blocking buffer: 5% non-fat dry milk in TBST. Detection: ECL Enhanced Kit. Exposure time: 120s.

实验步骤

访问官网浏览详情: www.ablybio.cn