

ALDH1B1 Rabbit pAb

货号: **AYP12408**

产品信息

反应	Human,Mouse,Rat
宿主	Rabbit
克隆性	Polyclonal
预测反应	WB: Rattus norvegicus , Homo sapiens
应用	WB
推荐浓度	WB: 1:500 - 1:2000
理论分子量	57kDa
实测分子量	57kDa
形式	Liquid
保存条件	Store at -20°C. Avoid freeze / thaw cycles. Buffer: PBS with 0.02% sodium azide,50% glycerol,pH7.3.
偶联物	Unconjugated
阳性对照	SW620,HepG2,SKOV3,Mouse testis,Mouse heart,Rat liver
细胞定位	Mitochondrion matrix
纯化	Affinity purification

抗原信息

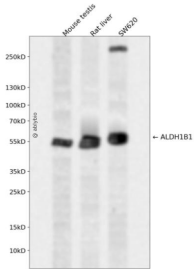
抗原信息	Recombinant fusion protein containing a sequence corresponding to amino acids 278-517 of human ALDH1B1 (NP_000683.3).
序列	NLKRVTLLELGGKSPSIVLADADMEHAVEQCHEALFFNMGQCCAGSRTFVEESIYNEFLERTVEKAKQRKVGPNPFELDTQ QGPQVDKEQFERVLGYIQLGQKEGAKLLCGGERFGERGFFIKPTVFGGVQDDMRIAKEEIFGPPVQPLFKFKKIEEVVERAN NTRYGLAAAVFTRDLDKAMYFTQALQAGTVVWNTYNIIVTCHTPFGGFKESGNRELGEDGLKAYTEVKTVTIKVPQKNS

靶点信息

研究背景	This protein belongs to the aldehyde dehydrogenases family of proteins. Aldehyde dehydrogenase is the second enzyme of the major oxidative pathway of alcohol metabolism. This gene does not contain introns in the coding sequence. The variation of this locus may affect the development of alcohol-related problems.
基因ID	219

基因名	ALDH1B1
Swiss	P30837
别名	ALDH1B1;ALDH5;ALDHX

产品验证



Western blot analysis of ALDH1B1 expressed in Mouse testis,Rat liver,SW620 using ALDH1B1 Rabbit p Ab at 1:1000. Secondary antibody: HRP Goat Anti-Rabbit IgG (H+L) at 1:5000. Lysates/proteins: 30ug per lane. Blocking buffer: 5% non-fat dry milk in TBST. Detection: ECL Enhanced Kit. Exposure time: 12 0s.

实验步骤

访问官网浏览详情: www.ablybio.cn