

ME1 Rabbit pAb

货号: **AYP12406**

产品信息

反应	Human,Mouse,Rat
宿主	Rabbit
克隆性	Polyclonal
预测反应	WB: Anatinae , Homo sapiens
应用	WB
推荐浓度	WB: 1:100 - 1:500
理论分子量	55kDa/64kDa
实测分子量	64KDa
形式	Liquid
保存条件	Store at -20°C. Avoid freeze / thaw cycles. Buffer: PBS with 0.05% proclin300,50% glycerol,pH7.3.
偶联物	Unconjugated
阳性对照	MCF7,Mouse liver,Mouse kidney,Mouse testis,Rat liver,PC-12
细胞定位	Cytoplasm
纯化	Affinity purification

抗原信息

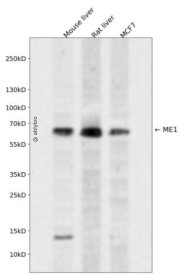
抗原信息	Recombinant fusion protein containing a sequence corresponding to amino acids 270-572 of human ME1 (NP_002386.1).
序列	IQGTASVAVAGLLAALRITKNKLSLSDQTLFQGAGEAALGIAHLIVMALEKEGLPKEKAIKKIWLVDKGLIVKGRASLTQEKEK FAHEHEEMKNLEAIVQEIKPTALIGVAAIGGAFSEQILKDMAAFNERPIIFALSNTSKAECSAEQCYKITKGRAIFASGSPFDP VTLPNGQTLYPGQGNNSYVFPGVACGLRQITDNIFLTTAEVIAQVSDKHLEEGRLYPPLNTIRDVSLKIAEKIVKDA YQEKATATVYPEPQNKEAFVRSQMYSTDYDQILPDCYSWPPEEVQKIQTQVDQ

靶点信息

研究背景	This gene encodes a cytosolic, NADP-dependent enzyme that generates NADPH for fatty acid biosynthesis . The activity of this enzyme, the reversible oxidative decarboxylation of malate, links the glycolytic and citric acid cycles. The regulation of expression for this gene is complex. Increased expression can result from elevated levels of thyroid hormones or by higher proportions of carbohydrates in the diet.
------	--

基因ID	4199
基因名	ME1
Swiss	P48163
别名	ME1;HUMNDME;MES

产品验证



Western blot analysis of ME1 expressed in Mouse liver,Rat liver,MCF7 using ME1 Rabbit pAb at 1:1000. Secondary antibody: HRP Goat Anti-Rabbit IgG (H+L) at 1:5000. Lysates/proteins: 30ug per lane. Blocking buffer: 5% non-fat dry milk in TBST. Detection: ECL Enhanced Kit. Exposure time: 120s.

实验步骤

访问官网浏览详情: www.ablybio.cn