

SLC20A1 Rabbit pAb

货号: **AYP12403**

产品信息

反应	Human,Mouse,Rat
宿主	Rabbit
克隆性	Polyclonal
预测反应	WB: Rattus norvegicus
应用	WB IF/ICC
推荐浓度	WB: 1:200 - 1:2000 IF/ICC: 1:50 - 1:200
理论分子量	73kDa
实测分子量	70-100kDa
形式	Liquid
保存条件	Store at -20°C. Avoid freeze / thaw cycles. Buffer: PBS with 0.02% sodium azide,50% glycerol,pH7.3.
偶联物	Unconjugated
阳性对照	293T,A-431,HeLa,HT-1080,NCI-H460,Mouse liver,Mouse brain,Rat brain
细胞定位	Membrane,Multi-pass membrane protein
纯化	Affinity purification

抗原信息

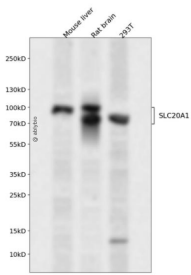
抗原信息	Recombinant fusion protein containing a sequence corresponding to amino acids 257-356 of human SLC20A1 (NP_005406.3).
序列	KIEREIKCSPSESPLMEKKNLKDHEETKLSVGDIENTKHPVSEVGPATVPLQAVVEERTVSFKLGDLEEAPERERLPSVDLK EETSIDSTVNGAVQLPN

靶点信息

研究背景	The protein encoded by this gene is a sodium-phosphate symporter that absorbs phosphate from interstitial fluid for use in cellular functions such as metabolism, signal transduction, and nucleic acid and lipid synthesis. The encoded protein is also a retroviral receptor, causing human cells to be susceptible to infection by gibbon ape leukemia virus, simian sarcoma-associated virus, feline leukemia virus subgroup B, and 10A1 murine leukemia virus.
------	---

基因ID	6574
基因名	SLC20A1
Swiss	Q8WUM9
别名	SLC20A1;GLVR1;Glv-1;PIT1;PiT-1

产品验证



Western blot analysis of SLC20A1 expressed in Mouse liver,Rat brain,293T using SLC20A1 Rabbit pAb at 1:1000. Secondary antibody: HRP Goat Anti-Rabbit IgG (H+L) at 1:5000. Lysates/proteins: 30ug per lane. Blocking buffer: 5% non-fat dry milk in TBST. Detection: ECL Enhanced Kit. Exposure time: 120s.

实验步骤

访问官网浏览详情: www.ablybio.cn