

RBM15 Rabbit pAb

货号: **AYP12396**

产品信息

反应	Human,Mouse
宿主	Rabbit
克隆性	Polyclonal
预测反应	WB: Homo sapiens
应用	WB IHC
推荐浓度	WB: 1:500 - 1:2000 IHC: 1:50 - 1:200
理论分子量	99kDa/104kDa/106kDa/107kDa
实测分子量	120kDa
形式	Liquid
保存条件	Store at -20°C. Avoid freeze / thaw cycles. Buffer: PBS with 0.02% sodium azide,50% glycerol,pH7.3.
偶联物	Unconjugated
阳性对照	HL-60,HepG2
细胞定位	Nucleus,Nucleus membrane,Nucleus speckle,Peripheral membrane protein,nucleoplasm
纯化	Affinity purification

抗原信息

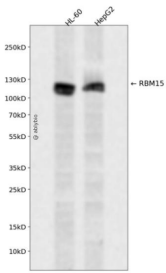
抗原信息	Recombinant fusion protein containing a sequence corresponding to amino acids 530-780 of human RBM 15 (NP_001188474.1).
序列	EHRYQQYQLPLPLTHYELVTDAFGHRAPDPLRGARDRTPELLYRDRDRDLYPDSWVPPPPVRRERSTRTAATSVPAYE PLDSLDRRRDGLWLDLDRDRGDRDLPSRDQPRKRRLPPEESGGRHLDRSPESDRPRKRHCAPSPDRSPELSSSRDRYNSD NDRSSRLLLRPSPIRDRRGSLEKSQGDKRDRKNSASAERDRKHRTTAPTEGKSPLKKEDRSDGSAPSTSTASSKLKSPS QKQDGGTAPVASA

靶点信息

研究背景	Members of the SPEN (Split-end) family of proteins, including RBM15, have repressor function in several signaling pathways and may bind to RNA through interaction with spliceosome components (Hiriart et al., 2005 [PubMed 16129689]).[supplied by OMIM, Feb 2009]
------	--

基因ID	64783
基因名	RBM15
Swiss	Q96T37
别名	RBM15;OTT;OTT1;SPEN

产品验证



Western blot analysis of RBM15 expressed in HL-60, HepG2 using RBM15 Rabbit pAb at 1:1000. Secondary antibody: HRP Goat Anti-Rabbit IgG (H+L) at 1:5000. Lysates/proteins: 30ug per lane. Blocking buffer: 5% non-fat dry milk in TBST. Detection: ECL Enhanced Kit. Exposure time: 120s.

实验步骤

访问官网浏览详情: www.ablybio.cn